



**ELECTRONIC COPY**

LG795642729  
Report verification at igi.org



May 11, 2026  
IGI Report Number **LG795642729**  
Description **LABORATORY GROWN DIAMOND**  
Shape and Cutting Style **SQUARE CUSHION MODIFIED BRILLIANT**  
Measurements **8.07 X 8.06 X 5.37 MM**  
**GRADING RESULTS**  
Carat Weight **3.09 CARATS**  
Color Grade **FANCY INTENSE YELLOW**  
Clarity Grade **VS 1**

**LABORATORY GROWN DIAMOND REPORT**

May 11, 2026  
IGI Report Number **LG795642729**  
Description **LABORATORY GROWN DIAMOND**  
Shape and Cutting Style **SQUARE CUSHION MODIFIED BRILLIANT**  
Measurements **8.07 X 8.06 X 5.37 MM**

**GRADING RESULTS**

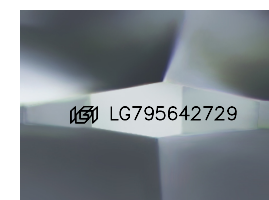
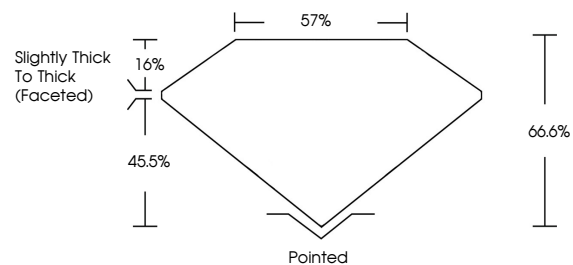
Carat Weight **3.09 CARATS**  
Color Grade **FANCY INTENSE YELLOW**  
Clarity Grade **VS 1**

**ADDITIONAL GRADING INFORMATION**

Polish **EXCELLENT**  
Symmetry **EXCELLENT**  
Fluorescence **NONE**  
Inscription(s) **IGI LG795642729**

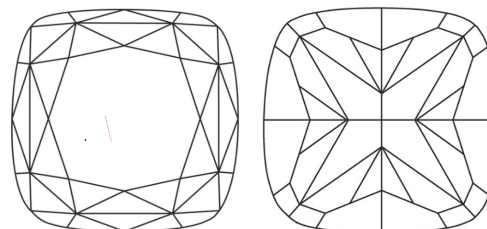
Comments: This Laboratory Grown Diamond was created by Chemical Vapor Deposition (CVD) growth process.

**PROPORTIONS**



Sample Image Used

**CLARITY CHARACTERISTICS**



**KEY TO SYMBOLS**

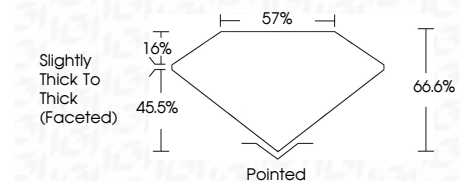
Red symbols indicate internal characteristics.  
Green symbols indicate external characteristics.

**COLOR**

D E F G H I J Faint Very Light Light

**CLARITY**

FL	IF	VS <sup>1-2</sup>	VS <sup>1-2</sup>	SI <sup>1-2</sup>	I <sup>1-3</sup>
Flawless	Internally Flawless	Very Very Slightly Included	Very Slightly Included	Slightly Included	Included



**ADDITIONAL GRADING INFORMATION**

Polish **EXCELLENT**  
Symmetry **EXCELLENT**  
Fluorescence **NONE**  
Inscription(s) **IGI LG795642729**  
Comments: This Laboratory Grown Diamond was created by Chemical Vapor Deposition (CVD) growth process.



May 11, 2026  
IGI Report No LG795642729  
**SQUARE CUSHION MODIFIED BRILLIANT**  
8.07 X 8.06 X 5.37 MM  
3.09 CARATS  
FANCY INTENSE YELLOW  
VS 1  
66.6%  
57%  
Slightly Thick To Thick (Faceted)  
Pointed  
EXCELLENT  
EXCELLENT  
NONE  
IGI LG795642729  
Comments: This Laboratory Grown Diamond was created by Chemical Vapor Deposition (CVD) growth process.