



ELECTRONIC COPY

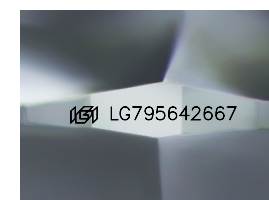
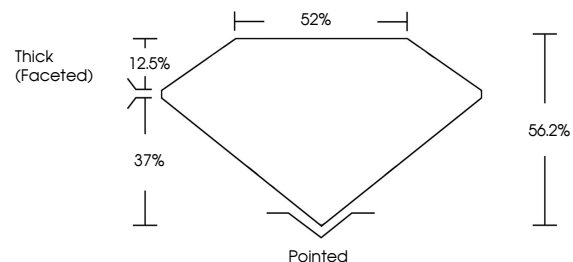
LG795642667
Report verification at igi.org



May 11, 2026
IGI Report Number **LG795642667**
Description **LABORATORY GROWN DIAMOND**
Shape and Cutting Style **CUSHION MODIFIED BRILLIANT**
Measurements **4.92 X 6.90 X 3.52 MM**
GRADING RESULTS
Carat Weight **1.00 CARAT**
Color Grade **FANCY YELLOW**
Clarity Grade **VS 1**

May 11, 2026
IGI Report Number **LG795642667**
Description **LABORATORY GROWN DIAMOND**
Shape and Cutting Style **CUSHION MODIFIED BRILLIANT**
Measurements **4.92 X 6.90 X 3.52 MM**

PROPORTIONS

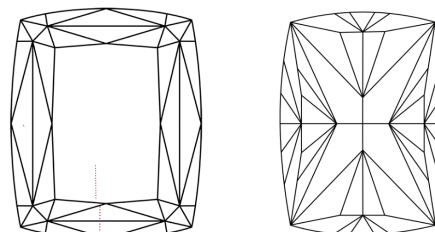


Sample Image Used

GRADING RESULTS

Carat Weight **1.00 CARAT**
Color Grade **FANCY YELLOW**
Clarity Grade **VS 1**

CLARITY CHARACTERISTICS



KEY TO SYMBOLS

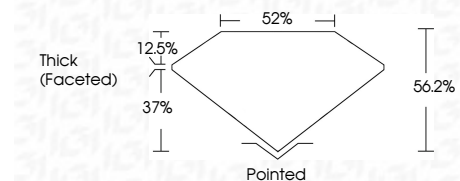
Red symbols indicate internal characteristics.
Green symbols indicate external characteristics.

COLOR

D E F G H I J Faint Very Light Light

CLARITY

FL	IF	VS ¹⁻²	VS ¹⁻²	SI ¹⁻²	I ¹⁻³
Flawless	Internally Flawless	Very Very Slightly Included	Very Slightly Included	Slightly Included	Included



ADDITIONAL GRADING INFORMATION

Polish **EXCELLENT**
Symmetry **EXCELLENT**
Fluorescence **NONE**
Inscription(s) **IGI LG795642667**
Comments: This Laboratory Grown Diamond was created by Chemical Vapor Deposition (CVD) growth process.



IGI



May 11, 2026
IGI Report No **LG795642667**
CUSHION MODIFIED BRILLIANT
4.92 X 6.90 X 3.52 MM
1.00 CARAT
FANCY YELLOW
VS 1
56.2%
37%
12.5%
Thick (Faceted)
Pointed
EXCELLENT
EXCELLENT
NONE
IGI LG795642667
Comments: This Laboratory Grown Diamond was created by Chemical Vapor Deposition (CVD) growth process.