



ELECTRONIC COPY

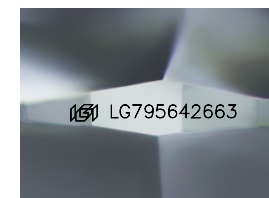
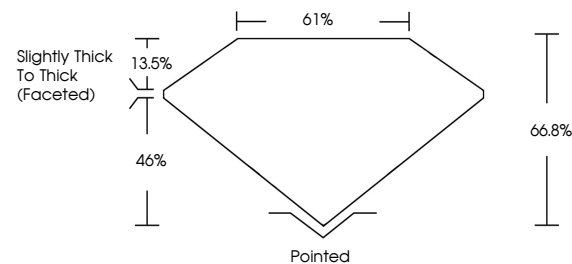
LG795642663
Report verification at igi.org



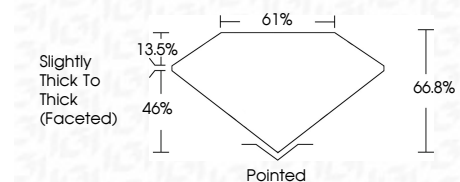
May 11, 2026
IGI Report Number **LG795642663**
Description **LABORATORY GROWN DIAMOND**
Shape and Cutting Style **SQUARE CUSHION MODIFIED BRILLIANT**
Measurements **5.69 X 5.63 X 3.76 MM**
GRADING RESULTS
Carat Weight **1.10 CARAT**
Color Grade **FANCY YELLOW**
Clarity Grade **VVS 2**

May 11, 2026
IGI Report Number **LG795642663**
Description **LABORATORY GROWN DIAMOND**
Shape and Cutting Style **SQUARE CUSHION MODIFIED BRILLIANT**
Measurements **5.69 X 5.63 X 3.76 MM**

PROPORTIONS



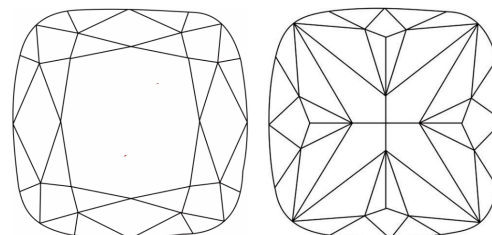
Sample Image Used



GRADING RESULTS

Carat Weight **1.10 CARAT**
Color Grade **FANCY YELLOW**
Clarity Grade **VVS 2**

CLARITY CHARACTERISTICS



ADDITIONAL GRADING INFORMATION

Polish **EXCELLENT**
Symmetry **EXCELLENT**
Fluorescence **VERY SLIGHT**
Inscription(s) **IGI LG795642663**

Comments: This Laboratory Grown Diamond was created by Chemical Vapor Deposition (CVD) growth process.

KEY TO SYMBOLS

Red symbols indicate internal characteristics.
Green symbols indicate external characteristics.

COLOR

D E F G H I J Faint Very Light Light

CLARITY

FL	IF	VVS ¹⁻²	VS ¹⁻²	SI ¹⁻²	I ¹⁻³
Flawless	Internally Flawless	Very Very Slightly Included	Very Slightly Included	Slightly Included	Included

ADDITIONAL GRADING INFORMATION

Polish **EXCELLENT**
Symmetry **EXCELLENT**
Fluorescence **VERY SLIGHT**
Inscription(s) **IGI LG795642663**
Comments: This Laboratory Grown Diamond was created by Chemical Vapor Deposition (CVD) growth process.



May 11, 2026
IGI Report No **LG795642663**
SQUARE CUSHION MODIFIED BRILLIANT
5.69 X 5.63 X 3.76 MM
Carat Weight **1.10 CARAT**
Color Grade **FANCY YELLOW**
Clarity Grade **VVS 2**
Depth **66.8%**
Table **61%**
Girdle **Slightly Thick To Thick (Faceted)**
Culet **Pointed**
Polish **EXCELLENT**
Symmetry **EXCELLENT**
Fluorescence **VERY SLIGHT**
Inscription(s) **IGI LG795642663**
Comments: This Laboratory Grown Diamond was created by Chemical Vapor Deposition (CVD) growth process.