



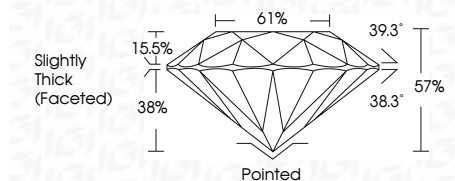
ELECTRONIC COPY

LG795642485
Report verification at igi.org



May 11, 2026
IGI Report Number **LG795642485**
Description **LABORATORY GROWN DIAMOND**
Shape and Cutting Style **ROUND MIXED CUT**
Measurements **9.24 - 9.26 X 5.28 MM**

GRADING RESULTS
Carat Weight **3.18 CARATS**
Color Grade **E**
Clarity Grade **VVS 2**



ADDITIONAL GRADING INFORMATION
Polish **EXCELLENT**
Symmetry **EXCELLENT**
Fluorescence **NONE**
Inscription(s) **IGI LG795642485**
Comments: This Laboratory Grown Diamond was created by Chemical Vapor Deposition (CVD) growth process. Type IIa



May 11, 2026
IGI Report No LG795642485
ROUND MIXED CUT
3.18 CARATS
Color Grade **E**
Clarity Grade **VVS 2**
Depth **57%**
Table **61%**
Girdle **Slightly Thick (Faceted)**
Culet **Pointed**
Polish **EXCELLENT**
Symmetry **EXCELLENT**
Fluorescence **NONE**
Inscription(s) **IGI LG795642485**
Comments: This Laboratory Grown Diamond was created by Chemical Vapor Deposition (CVD) growth process. Type IIa

LABORATORY GROWN DIAMOND REPORT

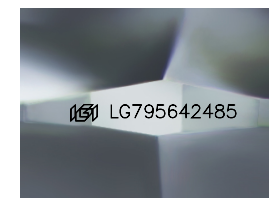
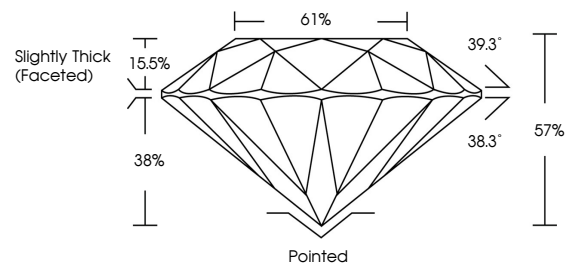
May 11, 2026
IGI Report Number **LG795642485**
Description **LABORATORY GROWN DIAMOND**
Shape and Cutting Style **ROUND MIXED CUT**
Measurements **9.24 - 9.26 X 5.28 MM**

GRADING RESULTS
Carat Weight **3.18 CARATS**
Color Grade **E**
Clarity Grade **VVS 2**

ADDITIONAL GRADING INFORMATION
Polish **EXCELLENT**
Symmetry **EXCELLENT**
Fluorescence **NONE**
Inscription(s) **IGI LG795642485**

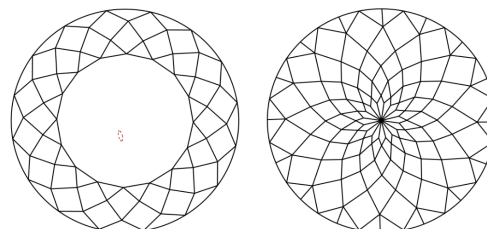
Comments: This Laboratory Grown Diamond was created by Chemical Vapor Deposition (CVD) growth process. Type IIa

PROPORTIONS



Sample Image Used

CLARITY CHARACTERISTICS



KEY TO SYMBOLS

Red symbols indicate internal characteristics.
Green symbols indicate external characteristics.

COLOR

D E F G H I J Faint Very Light Light

CLARITY

FL	IF	VVS ¹⁻²	VS ¹⁻²	SI ¹⁻²	I ¹⁻³
Flawless	Internally Flawless	Very Very Slightly Included	Very Slightly Included	Slightly Included	Included

