



ELECTRONIC COPY

LG795641964
Report verification at igi.org



May 11, 2026
IGI Report Number **LG795641964**
Description **LABORATORY GROWN DIAMOND**
Shape and Cutting Style **CUSHION MODIFIED BRILLIANT**
Measurements **7.89 X 7.10 X 4.96 MM**
GRADING RESULTS
Carat Weight **2.52 CARATS**
Color Grade **FANCY VIVID PINK**
Clarity Grade **SI 2**

LABORATORY GROWN DIAMOND REPORT

May 11, 2026
IGI Report Number **LG795641964**
Description **LABORATORY GROWN DIAMOND**
Shape and Cutting Style **CUSHION MODIFIED BRILLIANT**
Measurements **7.89 X 7.10 X 4.96 MM**

GRADING RESULTS

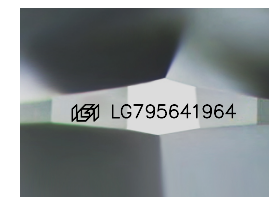
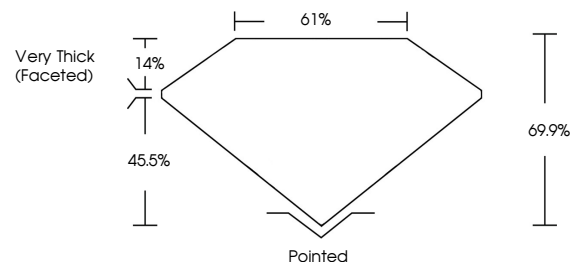
Carat Weight **2.52 CARATS**
Color Grade **FANCY VIVID PINK**
Clarity Grade **SI 2**

ADDITIONAL GRADING INFORMATION

Polish **EXCELLENT**
Symmetry **EXCELLENT**
Fluorescence **SLIGHT**
Inscription(s) **IGI LG795641964**

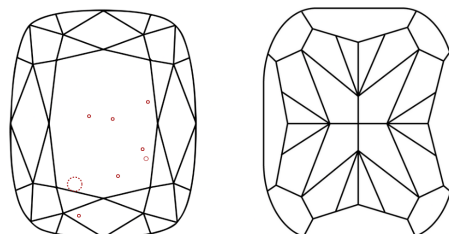
Comments: This Laboratory Grown Diamond was created by Chemical Vapor Deposition (CVD) growth process.
Indications of post-growth treatment.

PROPORTIONS



Sample Image Used

CLARITY CHARACTERISTICS



KEY TO SYMBOLS

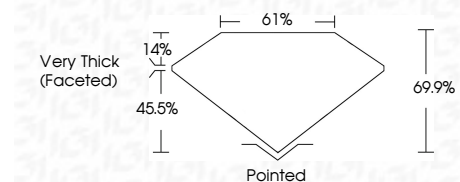
Red symbols indicate internal characteristics.
Green symbols indicate external characteristics.

COLOR

D E F G H I J Faint Very Light Light

CLARITY

FL	IF	VS ¹⁻²	VS ¹⁻²	SI ¹⁻²	I ¹⁻³
Flawless	Internally Flawless	Very Very Slightly Included	Very Slightly Included	Slightly Included	Included



ADDITIONAL GRADING INFORMATION

Polish **EXCELLENT**
Symmetry **EXCELLENT**
Fluorescence **SLIGHT**
Inscription(s) **IGI LG795641964**
Comments: This Laboratory Grown Diamond was created by Chemical Vapor Deposition (CVD) growth process.
Indications of post-growth treatment.



May 11, 2026
IGI Report No **LG795641964**
CUSHION MODIFIED BRILLIANT
7.89 X 7.10 X 4.96 MM
Carat Weight **2.52 CARATS**
Color Grade **FANCY VIVID PINK**
Clarity Grade **SI 2**
Depth **69.9%**
Table **61%**
Girdle **Very Thick (Faceted)**
Culet **Pointed**
Polish **EXCELLENT**
Symmetry **EXCELLENT**
Fluorescence **SLIGHT**
Inscription(s) **IGI LG795641964**

Comments: This Laboratory Grown Diamond was created by Chemical Vapor Deposition (CVD) growth process.
Indications of post-growth treatment.