



**ELECTRONIC COPY**

LG795641128  
Report verification at igi.org



May 12, 2026

IGI Report Number **LG795641128**

Description **LABORATORY GROWN DIAMOND**

Shape and Cutting Style **ROUND BRILLIANT**

Measurements **9.31 - 9.34 X 5.72 MM**

**GRADING RESULTS**

Carat Weight **3.04 CARATS**

Color Grade **F**

Clarity Grade **VS 1**

Cut Grade **IDEAL**

May 12, 2026

IGI Report Number **LG795641128**

Description **LABORATORY GROWN DIAMOND**

Shape and Cutting Style **ROUND BRILLIANT**

Measurements **9.31 - 9.34 X 5.72 MM**

**GRADING RESULTS**

Carat Weight **3.04 CARATS**

Color Grade **F**

Clarity Grade **VS 1**

Cut Grade **IDEAL**

**ADDITIONAL GRADING INFORMATION**

Polish **EXCELLENT**

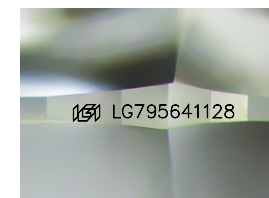
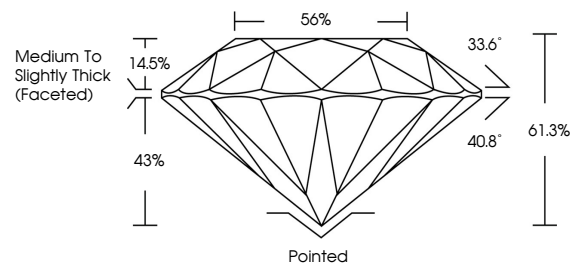
Symmetry **EXCELLENT**

Fluorescence **NONE**

Inscription(s) **IGI LG795641128**

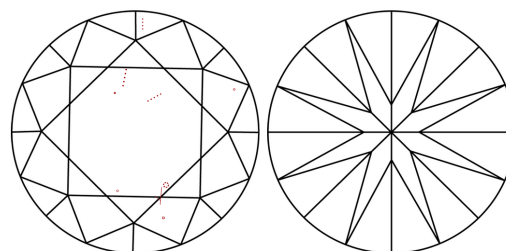
Comments: This Laboratory Grown Diamond was created by Chemical Vapor Deposition (CVD) growth process.  
Type IIa

**PROPORTIONS**



Sample Image Used

**CLARITY CHARACTERISTICS**



**KEY TO SYMBOLS**

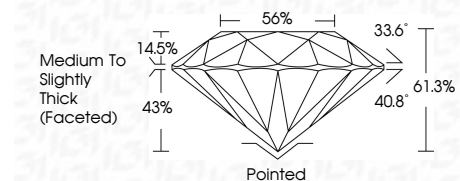
Red symbols indicate internal characteristics.  
Green symbols indicate external characteristics.

**COLOR**

D E F G H I J Faint Very Light Light

**CLARITY**

FL	IF	VS <sup>1-2</sup>	VS <sup>1-2</sup>	SI <sup>1-2</sup>	I <sup>1-3</sup>
Flawless	Internally Flawless	Very Very Slightly Included	Very Slightly Included	Slightly Included	Included



**ADDITIONAL GRADING INFORMATION**

Polish **EXCELLENT**

Symmetry **EXCELLENT**

Fluorescence **NONE**

Inscription(s) **IGI LG795641128**

Comments: This Laboratory Grown Diamond was created by Chemical Vapor Deposition (CVD) growth process.  
Type IIa



May 12, 2026  
IGI Report No LG795641128  
**ROUND BRILLIANT**

**3.04 CARATS**  
F

**9.31 - 9.34 X 5.72 MM**  
61.3%

**VS 1**  
**IDEAL**  
56%

**Medium To Slightly Thick (Faceted)**  
Pointed  
**EXCELLENT**  
**EXCELLENT**  
**NONE**  
IGI LG795641128

**Comments:** This Laboratory Grown Diamond was created by Chemical Vapor Deposition (CVD) growth process.  
Type IIa