



ELECTRONIC COPY

LABORATORY GROWN DIAMOND REPORT

May 12, 2026
IGI Report Number LG795640995
Description LABORATORY GROWN DIAMOND
Shape and Cutting Style PRINCESS CUT
Measurements 6.36 X 6.22 X 4.30 MM

GRADING RESULTS

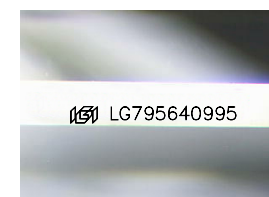
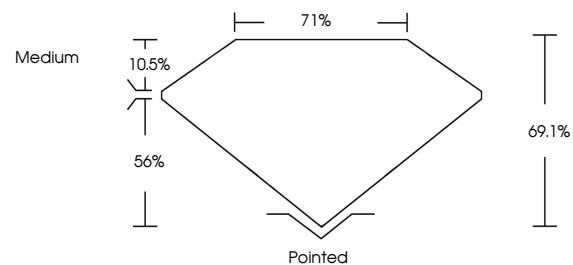
Carat Weight 1.50 CARAT
Color Grade E
Clarity Grade VS 1

ADDITIONAL GRADING INFORMATION

Polish EXCELLENT
Symmetry EXCELLENT
Fluorescence NONE
Inscription(s) IGI LG795640995

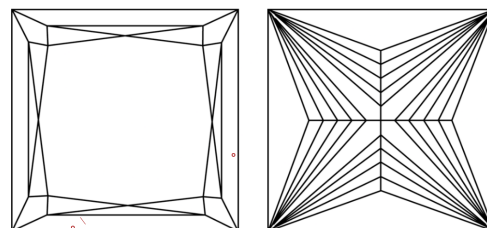
Comments: This Laboratory Grown Diamond was created by Chemical Vapor Deposition (CVD) growth process.
Type IIa

PROPORTIONS



Sample Image Used

CLARITY CHARACTERISTICS



KEY TO SYMBOLS

Red symbols indicate internal characteristics.
Green symbols indicate external characteristics.

COLOR

D E F G H I J Faint Very Light Light

CLARITY

FL IF VS¹⁻² VS¹⁻² SI¹⁻² I¹⁻³
Flawless Internally Flawless Very Very Slightly Included Very Slightly Included Slightly Included Included



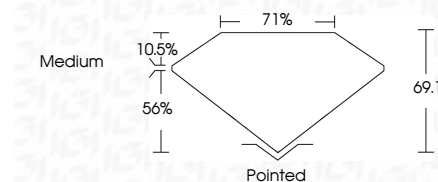
May 12, 2026
IGI Report Number LG795640995
Description LABORATORY GROWN DIAMOND
Shape and Cutting Style PRINCESS CUT
Measurements 6.36 X 6.22 X 4.30 MM

GRADING RESULTS

Carat Weight 1.50 CARAT
Color Grade E
Clarity Grade VS 1

ADDITIONAL GRADING INFORMATION

Polish EXCELLENT
Symmetry EXCELLENT
Fluorescence NONE
Inscription(s) IGI LG795640995
Comments: This Laboratory Grown Diamond was created by Chemical Vapor Deposition (CVD) growth process.
Type IIa



May 12, 2026
IGI Report No LG795640995
PRINCESS CUT
1.50 CARAT E
6.36 X 6.22 X 4.30 MM
Carat Weight
Color Grade
Clarity Grade VS 1
Depth 69.1%
Table 10.5%
Girdle 71%
Medium
Pointed
Culet
Polish EXCELLENT
Symmetry EXCELLENT
Fluorescence NONE
Inscription(s) IGI LG795640995
Comments: This Laboratory Grown Diamond was created by Chemical Vapor Deposition (CVD) growth process.
Type IIa