



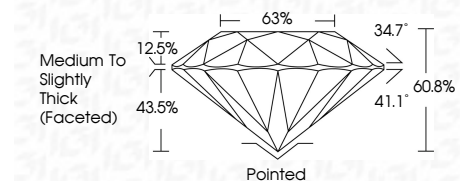
**ELECTRONIC COPY**

LG795640954  
Report verification at igi.org



May 12, 2026  
IGI Report Number **LG795640954**  
Description **LABORATORY GROWN DIAMOND**  
Shape and Cutting Style **ROUND BRILLIANT**  
Measurements **7.29 - 7.33 X 4.45 MM**

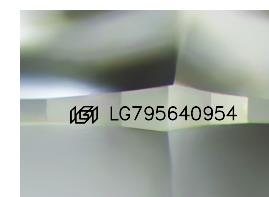
**GRADING RESULTS**  
Carat Weight **1.50 CARAT**  
Color Grade **E**  
Clarity Grade **VVS 2**  
Cut Grade **EXCELLENT**



**ADDITIONAL GRADING INFORMATION**  
Polish **EXCELLENT**  
Symmetry **EXCELLENT**  
Fluorescence **NONE**  
Inscription(s) **IGI LG795640954**  
Comments: This Laboratory Grown Diamond was created by Chemical Vapor Deposition (CVD) growth process. Type IIa

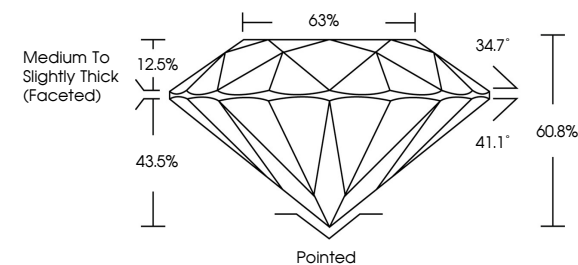


May 12, 2026  
IGI Report No LG795640954  
**ROUND BRILLIANT**  
1.50 CARAT  
Color Grade **E**  
Clarity Grade **VVS 2**  
Depth **60.8%**  
Table **63%**  
Crown **Medium To Slightly Thick (Faceted)**  
Pavilion **Pointed**  
Polish **EXCELLENT**  
Symmetry **EXCELLENT**  
Fluorescence **NONE**  
Inscription(s) **IGI LG795640954**  
Comments: This Laboratory Grown Diamond was created by Chemical Vapor Deposition (CVD) growth process. Type IIa

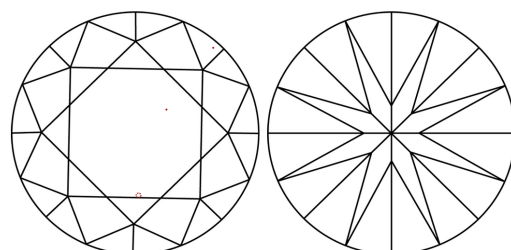


Sample Image Used

**PROPORTIONS**



**CLARITY CHARACTERISTICS**



**KEY TO SYMBOLS**

Red symbols indicate internal characteristics.  
Green symbols indicate external characteristics.

**COLOR**

D E F G H I J Faint Very Light Light

**CLARITY**

FL	IF	VVS <sup>1-2</sup>	VS <sup>1-2</sup>	SI <sup>1-2</sup>	I <sup>1-3</sup>
Flawless	Internally Flawless	Very Very Slightly Included	Very Slightly Included	Slightly Included	Included

