



ELECTRONIC COPY

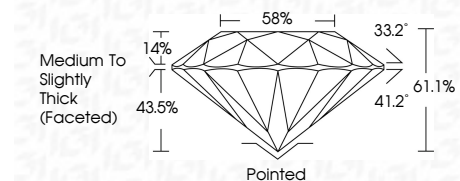
LG795640795
Report verification at igi.org



May 9, 2026
IGI Report Number LG795640795
Description LABORATORY GROWN DIAMOND
Shape and Cutting Style ROUND BRILLIANT
Measurements 7.53 - 7.56 X 4.60 MM

GRADING RESULTS

Carat Weight 1.59 CARAT
Color Grade E
Clarity Grade VS 2
Cut Grade IDEAL

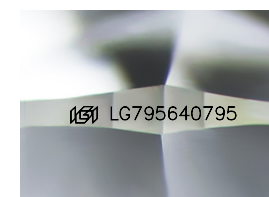


ADDITIONAL GRADING INFORMATION

Polish EXCELLENT
Symmetry EXCELLENT
Fluorescence NONE
Inscription(s) IGI LG795640795
Comments: This Laboratory Grown Diamond was created by Chemical Vapor Deposition (CVD) growth process. Type IIa

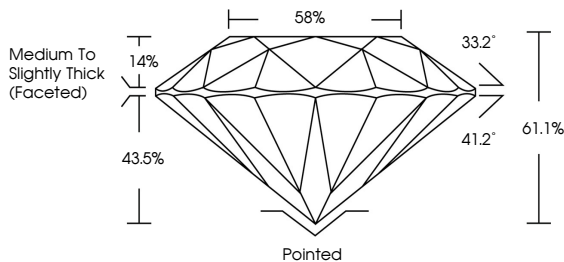


May 9, 2026
IGI Report No LG795640795
ROUND BRILLIANT
1.59 CARAT E
7.53 - 7.56 X 4.60 MM
Color Grade VS 2
Clarity Grade IDEAL
Depth 61.1%
Table 58%
Medium To Slightly Thick (Faceted)
Pointed EXCELLENT
Cut Grade EXCELLENT
Symmetry EXCELLENT
Fluorescence NONE
Inscription(s) IGI LG795640795
Comments: This Laboratory Grown Diamond was created by Chemical Vapor Deposition (CVD) growth process. Type IIa

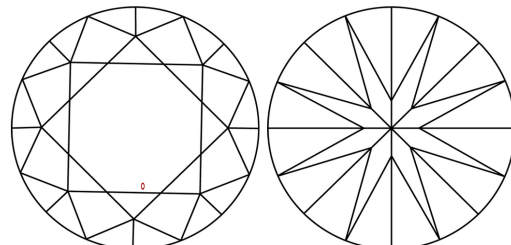


Sample Image Used

PROPORTIONS



CLARITY CHARACTERISTICS



KEY TO SYMBOLS

Red symbols indicate internal characteristics.
Green symbols indicate external characteristics.

COLOR

Table with color grades: D, E, F, G, H, I, J, Faint, Very Light, Light

CLARITY

Table with clarity grades: FL, IF, VS 1-2, VS 1-2, SI 1-2, I 1-3, Flawless, Internally Flawless, Very Very Slightly Included, Very Slightly Included, Slightly Included, Included

