



**ELECTRONIC COPY**

LG795640773  
Report verification at igi.org



May 12, 2026  
IGI Report Number **LG795640773**  
Description **LABORATORY GROWN DIAMOND**  
Shape and Cutting Style **CUSHION MODIFIED BRILLIANT**  
Measurements **6.74 X 5.29 X 3.66 MM**  
**GRADING RESULTS**  
Carat Weight **1.02 CARAT**  
Color Grade **D**  
Clarity Grade **VVS 2**

**LABORATORY GROWN DIAMOND REPORT**

May 12, 2026  
IGI Report Number **LG795640773**  
Description **LABORATORY GROWN DIAMOND**  
Shape and Cutting Style **CUSHION MODIFIED BRILLIANT**  
Measurements **6.74 X 5.29 X 3.66 MM**

**GRADING RESULTS**

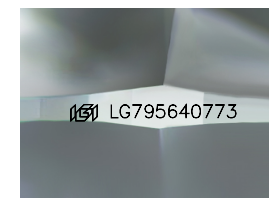
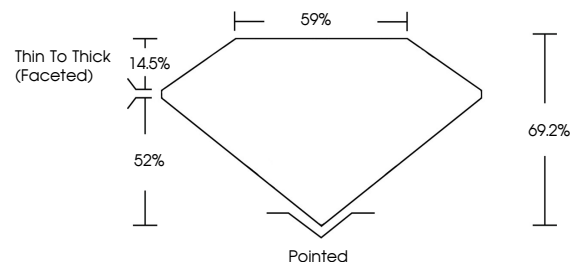
Carat Weight **1.02 CARAT**  
Color Grade **D**  
Clarity Grade **VVS 2**

**ADDITIONAL GRADING INFORMATION**

Polish **EXCELLENT**  
Symmetry **EXCELLENT**  
Fluorescence **NONE**  
Inscription(s) **IGI LG795640773**

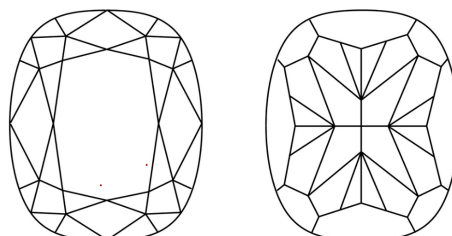
Comments: This Laboratory Grown Diamond was created by Chemical Vapor Deposition (CVD) growth process. Type IIa

**PROPORTIONS**



Sample Image Used

**CLARITY CHARACTERISTICS**



**KEY TO SYMBOLS**

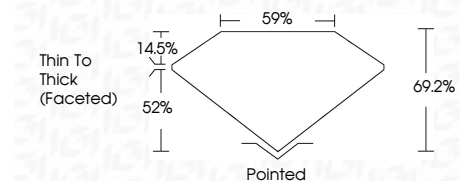
Red symbols indicate internal characteristics.  
Green symbols indicate external characteristics.

**COLOR**

D E F G H I J Faint Very Light Light

**CLARITY**

FL	IF	VVS <sup>1-2</sup>	VS <sup>1-2</sup>	SI <sup>1-2</sup>	I <sup>1-3</sup>
Flawless	Internally Flawless	Very Very Slightly Included	Very Slightly Included	Slightly Included	Included



**ADDITIONAL GRADING INFORMATION**

Polish **EXCELLENT**  
Symmetry **EXCELLENT**  
Fluorescence **NONE**  
Inscription(s) **IGI LG795640773**  
Comments: This Laboratory Grown Diamond was created by Chemical Vapor Deposition (CVD) growth process. Type IIa



May 12, 2026  
IGI Report No LG795640773  
CUSHION MODIFIED BRILLIANT  
6.74 X 5.29 X 3.66 MM  
Carat Weight 1.02 CARAT  
Color Grade D  
Clarity Grade VVS 2  
Depth 69.2%  
Table 59%  
Girdle Thin To Thick (Faceted)  
Culet Pointed  
Polish EXCELLENT  
Symmetry EXCELLENT  
Fluorescence NONE  
Inscription(s) IGI LG795640773  
Comments: This Laboratory Grown Diamond was created by Chemical Vapor Deposition (CVD) growth process. Type IIa