



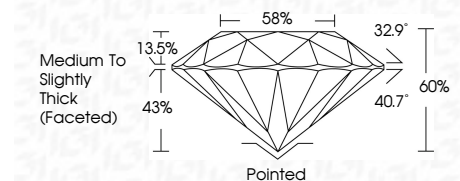
ELECTRONIC COPY

LG795640606 Report verification at igi.org



May 12, 2026 IGI Report Number LG795640606 Description LABORATORY GROWN DIAMOND Shape and Cutting Style ROUND BRILLIANT Measurements 6.50 - 6.54 X 3.92 MM

GRADING RESULTS Carat Weight 1.01 CARAT Color Grade E Clarity Grade VVS 2 Cut Grade IDEAL



ADDITIONAL GRADING INFORMATION Polish EXCELLENT Symmetry EXCELLENT Fluorescence NONE Inscription(s) LG795640606 Comments: This Laboratory Grown Diamond was created by Chemical Vapor Deposition (CVD) growth process. Type IIa



May 12, 2026 IGI Report No LG795640606 ROUND BRILLIANT 6.50 - 6.54 X 3.92 MM 1.01 CARAT E VVS 2 IDEAL 60% 58% Medium To Slightly Thick (Faceted) Pointed EXCELLENT EXCELLENT NONE LG795640606

LABORATORY GROWN DIAMOND REPORT

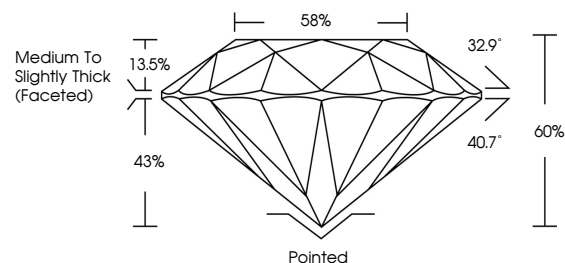
May 12, 2026 IGI Report Number LG795640606 Description LABORATORY GROWN DIAMOND Shape and Cutting Style ROUND BRILLIANT Measurements 6.50 - 6.54 X 3.92 MM

GRADING RESULTS Carat Weight 1.01 CARAT Color Grade E Clarity Grade VVS 2 Cut Grade IDEAL

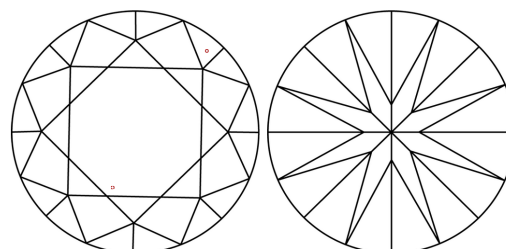
ADDITIONAL GRADING INFORMATION Polish EXCELLENT Symmetry EXCELLENT Fluorescence NONE Inscription(s) LG795640606

Comments: This Laboratory Grown Diamond was created by Chemical Vapor Deposition (CVD) growth process. Type IIa

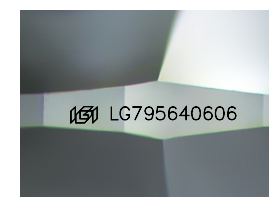
PROPORTIONS



CLARITY CHARACTERISTICS



KEY TO SYMBOLS Red symbols indicate internal characteristics. Green symbols indicate external characteristics.



Sample Image Used

COLOR

D E F G H I J Faint Very Light Light

CLARITY

FL IF VVS 1-2 VS 1-2 SI 1-2 I 1-3 Flawless Internally Flawless Very Very Slightly Included Very Slightly Included Slightly Included Included

