



ELECTRONIC COPY

LG795640594
Report verification at igi.org



May 12, 2026
IGI Report Number **LG795640594**
Description **LABORATORY GROWN DIAMOND**
Shape and Cutting Style **ROUND BRILLIANT**
Measurements **6.42 - 6.45 X 3.86 MM**
GRADING RESULTS
Carat Weight **1.01 CARAT**
Color Grade **E**
Clarity Grade **VS 1**
Cut Grade **VERY GOOD**

May 12, 2026
IGI Report Number **LG795640594**
Description **LABORATORY GROWN DIAMOND**
Shape and Cutting Style **ROUND BRILLIANT**
Measurements **6.42 - 6.45 X 3.86 MM**

GRADING RESULTS

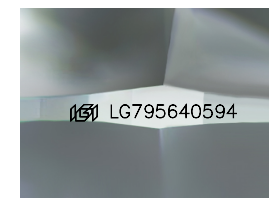
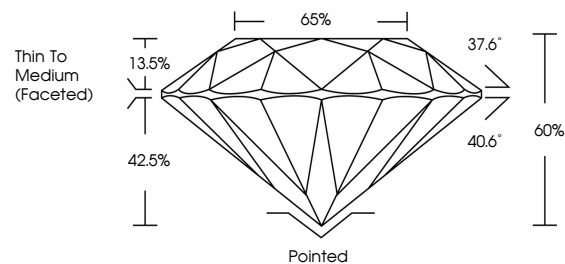
Carat Weight **1.01 CARAT**
Color Grade **E**
Clarity Grade **VS 1**
Cut Grade **VERY GOOD**

ADDITIONAL GRADING INFORMATION

Polish **EXCELLENT**
Symmetry **VERY GOOD**
Fluorescence **NONE**
Inscription(s) **IGI LG795640594**

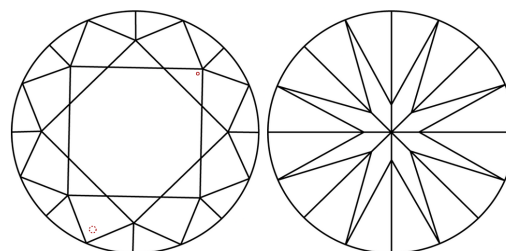
Comments: This Laboratory Grown Diamond was created by Chemical Vapor Deposition (CVD) growth process.
Type IIa

PROPORTIONS



Sample Image Used

CLARITY CHARACTERISTICS



KEY TO SYMBOLS

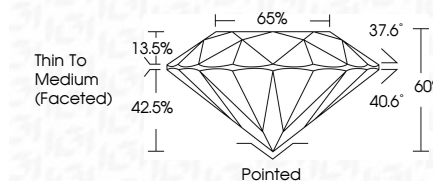
Red symbols indicate internal characteristics.
Green symbols indicate external characteristics.

COLOR

D E F G H I J Faint Very Light Light

CLARITY

FL	IF	VS ¹⁻²	VS ¹⁻²	SI ¹⁻²	I ¹⁻³
Flawless	Internally Flawless	Very Very Slightly Included	Very Slightly Included	Slightly Included	Included



ADDITIONAL GRADING INFORMATION

Polish **EXCELLENT**
Symmetry **VERY GOOD**
Fluorescence **NONE**
Inscription(s) **IGI LG795640594**
Comments: This Laboratory Grown Diamond was created by Chemical Vapor Deposition (CVD) growth process.
Type IIa



May 12, 2026
IGI Report No LG795640594
ROUND BRILLIANT
6.42 - 6.45 X 3.86 MM
1.01 CARAT
E
VS 1
VERY GOOD
65%
65%
Thin To Medium (Faceted)
Pointed
EXCELLENT
VERY GOOD
NONE
IGI LG795640594
Comments: This Laboratory Grown Diamond was created by Chemical Vapor Deposition (CVD) growth process.
Type IIa