



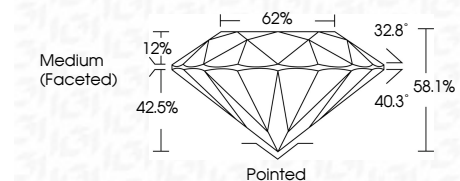
ELECTRONIC COPY

LG795640464 Report verification at igi.org



May 12, 2026 IGI Report Number LG795640464 Description LABORATORY GROWN DIAMOND Shape and Cutting Style ROUND BRILLIANT Measurements 6.74 - 6.79 X 3.93 MM

GRADING RESULTS Carat Weight 1.10 CARAT Color Grade E Clarity Grade VS 1 Cut Grade EXCELLENT



ADDITIONAL GRADING INFORMATION Polish EXCELLENT Symmetry EXCELLENT Fluorescence NONE Inscription(s) IGI LG795640464 Comments: This Laboratory Grown Diamond was created by Chemical Vapor Deposition (CVD) growth process. Type IIa



May 12, 2026 IGI Report No LG795640464 ROUND BRILLIANT 6.74 - 6.79 X 3.93 MM 1.10 CARAT E Color Grade VS 1 EXCELLENT 62% Depth 58.1% Medium (Faceted) 62% Girdle Pointed EXCELLENT EXCELLENT NONE NONE IGI LG795640464 Comments: This Laboratory Grown Diamond was created by Chemical Vapor Deposition (CVD) growth process. Type IIa

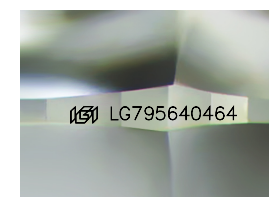
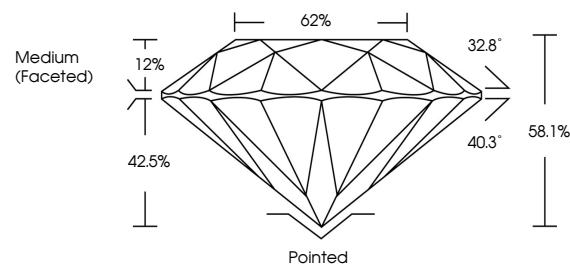
May 12, 2026 IGI Report Number LG795640464 Description LABORATORY GROWN DIAMOND Shape and Cutting Style ROUND BRILLIANT Measurements 6.74 - 6.79 X 3.93 MM

GRADING RESULTS Carat Weight 1.10 CARAT Color Grade E Clarity Grade VS 1 Cut Grade EXCELLENT

ADDITIONAL GRADING INFORMATION Polish EXCELLENT Symmetry EXCELLENT Fluorescence NONE Inscription(s) IGI LG795640464

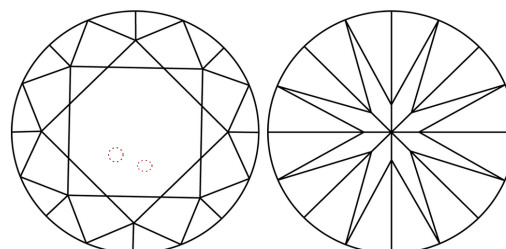
Comments: This Laboratory Grown Diamond was created by Chemical Vapor Deposition (CVD) growth process. Type IIa

PROPORTIONS



Sample Image Used

CLARITY CHARACTERISTICS



KEY TO SYMBOLS

Red symbols indicate internal characteristics. Green symbols indicate external characteristics.

COLOR

D E F G H I J Faint Very Light Light

CLARITY

Table with columns: FL, IF, VS 1-2, VS 1-2, SI 1-2, I 1-3 and rows: Flawless, Internally Flawless, Very Very Slightly Included, Very Slightly Included, Slightly Included, Included

