



ELECTRONIC COPY

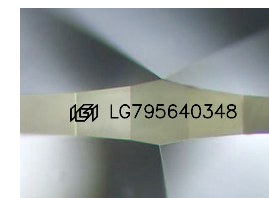
LG795640348
Report verification at igi.org



May 11, 2026
IGI Report Number **LG795640348**
Description **LABORATORY GROWN DIAMOND**

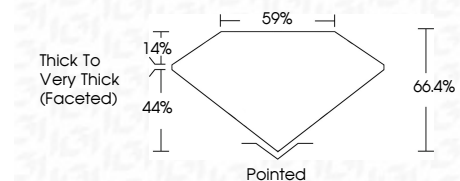
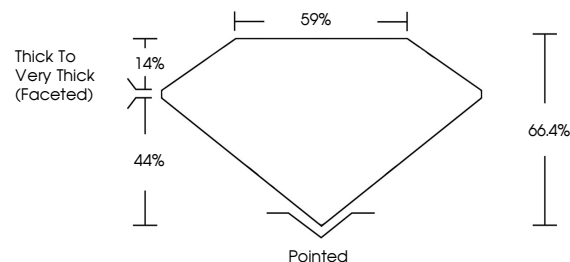
Shape and Cutting Style **PEAR MODIFIED BRILLIANT**
Measurements **10.84 X 6.70 X 4.45 MM**

GRADING RESULTS
Carat Weight **2.52 CARATS**
Color Grade **FANCY VIVID GREEN**
Clarity Grade **VVS 2**

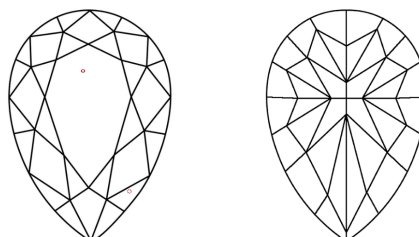


Sample Image Used

PROPORTIONS



CLARITY CHARACTERISTICS



KEY TO SYMBOLS

Red symbols indicate internal characteristics.
Green symbols indicate external characteristics.

COLOR

D E F G H I J Faint Very Light Light

CLARITY

FL	IF	VVS ¹⁻²	VS ¹⁻²	SI ¹⁻²	I ¹⁻³
Flawless	Internally Flawless	Very Very Slightly Included	Very Slightly Included	Slightly Included	Included

ADDITIONAL GRADING INFORMATION

Polish **EXCELLENT**
Symmetry **EXCELLENT**
Fluorescence **VERY SLIGHT**
Inscription(s) **IGI LG795640348**

Comments: This Laboratory Grown Diamond was created by Chemical Vapor Deposition (CVD) growth process. Indications of post-growth treatment.



May 11, 2026
IGI Report No LG795640348
PEAR MODIFIED BRILLIANT
10.84 X 6.70 X 4.45 MM
2.52 CARATS
FANCY VIVID GREEN
VVS 2
66.4%
59%
Thick to Very Thick (Faceted)
Pointed
EXCELLENT
EXCELLENT
VERY SLIGHT
IGI LG795640348

Comments: This Laboratory Grown Diamond was created by Chemical Vapor Deposition (CVD) growth process. Indications of post-growth treatment.