



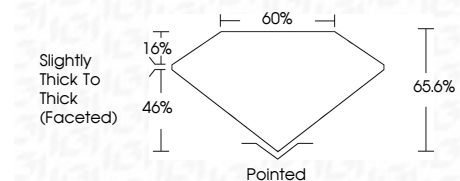
ELECTRONIC COPY

LG795640274 Report verification at igi.org



May 8, 2026 IGI Report Number LG795640274 Description LABORATORY GROWN DIAMOND Shape and Cutting Style ROUND MODIFIED BRILLIANT Measurements 7.56 - 7.61 X 4.99 MM

GRADING RESULTS Carat Weight 2.00 CARATS Color Grade E Clarity Grade VS 1



ADDITIONAL GRADING INFORMATION Polish EXCELLENT Symmetry EXCELLENT Fluorescence NONE Inscription(s) LG795640274 Comments: This Laboratory Grown Diamond was created by Chemical Vapor Deposition (CVD) growth process. Type IIa



May 8, 2026 IGI Report No. LG795640274 ROUND MODIFIED BRILLIANT 7.56 - 7.61 X 4.99 MM 2.00 CARATS E VS 1 65.6% 46% Slightly Thick To Thick (Faceted) Pointed EXCELLENT EXCELLENT NONE LG795640274

Comments: This Laboratory Grown Diamond was created by Chemical Vapor Deposition (CVD) growth process. Type IIa

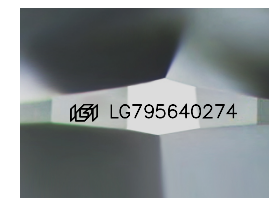
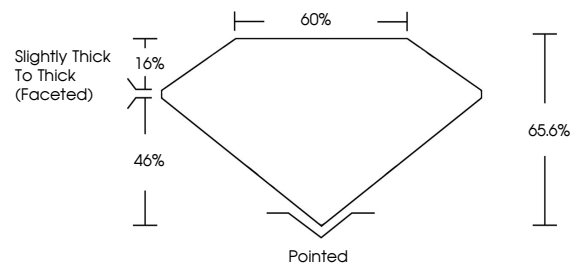
May 8, 2026 IGI Report Number LG795640274 Description LABORATORY GROWN DIAMOND Shape and Cutting Style ROUND MODIFIED BRILLIANT Measurements 7.56 - 7.61 X 4.99 MM

GRADING RESULTS Carat Weight 2.00 CARATS Color Grade E Clarity Grade VS 1

ADDITIONAL GRADING INFORMATION Polish EXCELLENT Symmetry EXCELLENT Fluorescence NONE Inscription(s) LG795640274

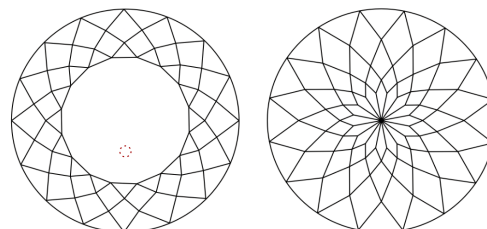
Comments: This Laboratory Grown Diamond was created by Chemical Vapor Deposition (CVD) growth process. Type IIa

PROPORTIONS



Sample Image Used

CLARITY CHARACTERISTICS



KEY TO SYMBOLS

Red symbols indicate internal characteristics. Green symbols indicate external characteristics.

COLOR

D E F G H I J Faint Very Light Light

CLARITY

Table with columns: FL, IF, VS 1-2, VVS 1-2, SI 1-2, I 1-3 and corresponding descriptions: Flawless, Internally Flawless, Very Very Slightly Included, Very Slightly Included, Slightly Included, Included

