



ELECTRONIC COPY

LG795640079
Report verification at igi.org



May 6, 2026

IGI Report Number **LG795640079**

Description **LABORATORY GROWN DIAMOND**

Shape and Cutting Style **PRINCESS CUT**

Measurements **5.60 X 5.56 X 3.69 MM**

GRADING RESULTS

Carat Weight **1.01 CARAT**

Color Grade **FANCY PINK**

Clarity Grade **VS 1**

LABORATORY GROWN DIAMOND REPORT

May 6, 2026

IGI Report Number **LG795640079**

Description **LABORATORY GROWN DIAMOND**

Shape and Cutting Style **PRINCESS CUT**

Measurements **5.60 X 5.56 X 3.69 MM**

GRADING RESULTS

Carat Weight **1.01 CARAT**

Color Grade **FANCY PINK**

Clarity Grade **VS 1**

ADDITIONAL GRADING INFORMATION

Polish **VERY GOOD**

Symmetry **EXCELLENT**

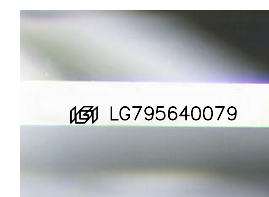
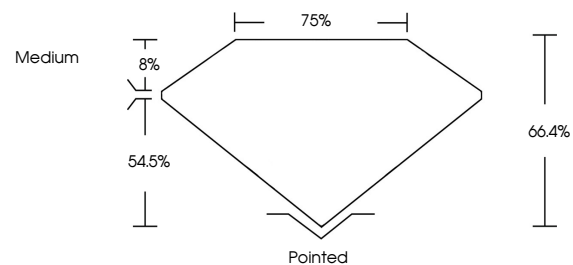
Fluorescence **SLIGHT**

Inscription(s) **IGI LG795640079**

Comments: This Laboratory Grown Diamond was created by Chemical Vapor Deposition (CVD) growth process.

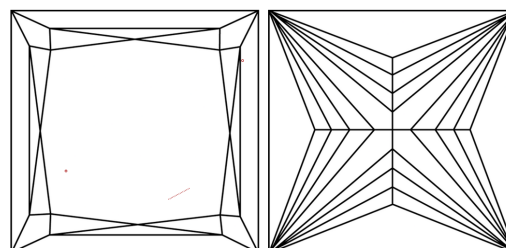
Indications of post-growth treatment.

PROPORTIONS



Sample Image Used

CLARITY CHARACTERISTICS



KEY TO SYMBOLS

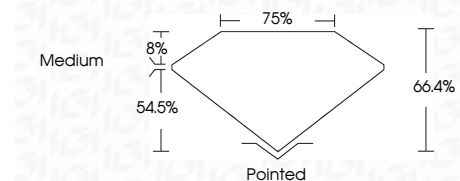
Red symbols indicate internal characteristics.
Green symbols indicate external characteristics.

COLOR

D E F G H I J Faint Very Light Light

CLARITY

FL	IF	VS ¹⁻²	VS ¹⁻²	SI ¹⁻²	I ¹⁻³
Flawless	Internally Flawless	Very Very Slightly Included	Very Slightly Included	Slightly Included	Included



ADDITIONAL GRADING INFORMATION

Polish **VERY GOOD**

Symmetry **EXCELLENT**

Fluorescence **SLIGHT**

Inscription(s) **IGI LG795640079**

Comments: This Laboratory Grown Diamond was created by Chemical Vapor Deposition (CVD) growth process. Indications of post-growth treatment.



May 6, 2026
IGI Report No. **LG795640079**
PRINCESS CUT

1.01 CARAT
FANCY PINK

Carat Weight
Color Grade
Clarity Grade
Depth
Table
Girdle
Medium

Polished
VERY GOOD
EXCELLENT
SLIGHT

Inscription(s)
IGI LG795640079

Comments: This Laboratory Grown Diamond was created by Chemical Vapor Deposition (CVD) growth process. Indications of post-growth treatment.