



ELECTRONIC COPY

LG795640074 Report verification at igi.org



May 6, 2026 IGI Report Number LG795640074 Description LABORATORY GROWN DIAMOND Shape and Cutting Style CUSHION MODIFIED BRILLIANT Measurements 9.29 X 7.21 X 4.54 MM GRADING RESULTS Carat Weight 2.51 CARATS Color Grade FANCY INTENSE PINK Clarity Grade VVS 2

May 6, 2026 IGI Report Number LG795640074 Description LABORATORY GROWN DIAMOND Shape and Cutting Style CUSHION MODIFIED BRILLIANT Measurements 9.29 X 7.21 X 4.54 MM

GRADING RESULTS

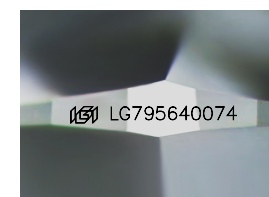
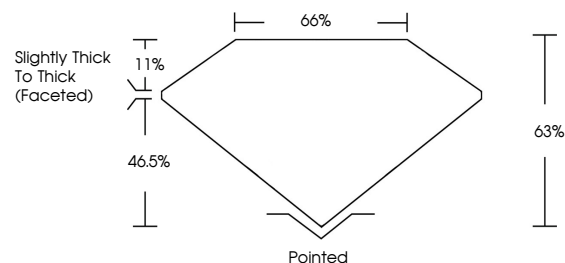
Carat Weight 2.51 CARATS Color Grade FANCY INTENSE PINK Clarity Grade VVS 2

ADDITIONAL GRADING INFORMATION

Polish VERY GOOD Symmetry EXCELLENT Fluorescence SLIGHT Inscription(s) IGI LG795640074

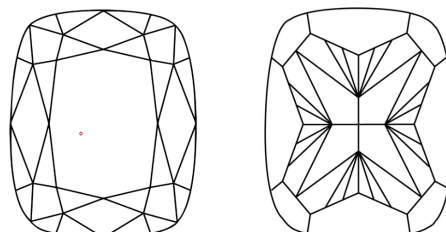
Comments: This Laboratory Grown Diamond was created by Chemical Vapor Deposition (CVD) growth process. Indications of post-growth treatment.

PROPORTIONS



Sample Image Used

CLARITY CHARACTERISTICS



KEY TO SYMBOLS

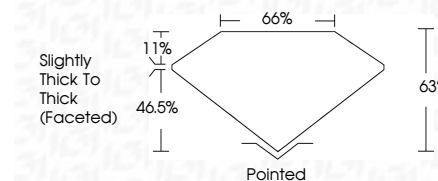
Red symbols indicate internal characteristics. Green symbols indicate external characteristics.

COLOR

D E F G H I J Faint Very Light Light

CLARITY

FL IF VVS 1-2 VS 1-2 SI 1-2 I 1-3 Flawless Internally Flawless Very Very Slightly Included Very Slightly Included Slightly Included Included



ADDITIONAL GRADING INFORMATION

Polish VERY GOOD Symmetry EXCELLENT Fluorescence SLIGHT Inscription(s) IGI LG795640074 Comments: This Laboratory Grown Diamond was created by Chemical Vapor Deposition (CVD) growth process. Indications of post-growth treatment.



May 6, 2026 IGI Report No LG795640074 CUSHION MODIFIED BRILLIANT 9.29 X 7.21 X 4.54 MM 2.51 CARATS FANCY INTENSE PINK VVS 2 63% 65% Slightly Thick To Thick (Faceted) Pointed VERY GOOD EXCELLENT SLIGHT IGI LG795640074 Comments: This Laboratory Grown Diamond was created by Chemical Vapor Deposition (CVD) growth process. Indications of post-growth treatment.