



ELECTRONIC COPY

LG795635309
Report verification at igi.org



May 29, 2026
IGI Report Number LG795635309
Description LABORATORY GROWN DIAMOND
Shape and Cutting Style CUT CORNERED RECTANGULAR MODIFIED BRILLIANT
Measurements 9.72 X 7.14 X 4.84 MM
GRADING RESULTS
Carat Weight 3.00 CARATS
Color Grade FANCY VIVID PINK
Clarity Grade VVS 2

LABORATORY GROWN DIAMOND REPORT

May 29, 2026
IGI Report Number LG795635309
Description LABORATORY GROWN DIAMOND
Shape and Cutting Style CUT CORNERED RECTANGULAR MODIFIED BRILLIANT
Measurements 9.72 X 7.14 X 4.84 MM

GRADING RESULTS

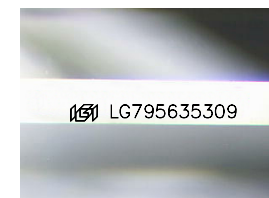
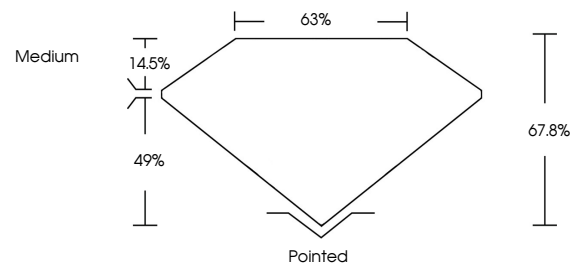
Carat Weight 3.00 CARATS
Color Grade FANCY VIVID PINK
Clarity Grade VVS 2

ADDITIONAL GRADING INFORMATION

Polish EXCELLENT
Symmetry EXCELLENT
Fluorescence SLIGHT
Inscription(s) LG795635309

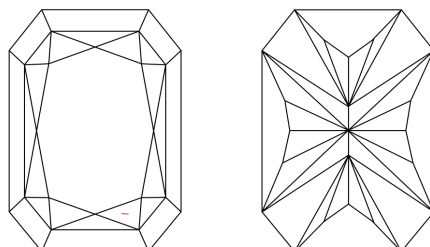
Comments: This Laboratory Grown Diamond was created by Chemical Vapor Deposition (CVD) growth process.
Indications of post-growth treatment.

PROPORTIONS



Sample Image Used

CLARITY CHARACTERISTICS



KEY TO SYMBOLS

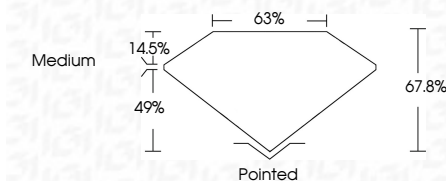
Red symbols indicate internal characteristics.
Green symbols indicate external characteristics.

COLOR

D E F G H I J Faint Very Light Light

CLARITY

FL IF VVS 1-2 VS 1-2 SI 1-2 I 1-3
Flawless Internally Flawless Very Very Slightly Included Very Slightly Included Slightly Included Included



ADDITIONAL GRADING INFORMATION

Polish EXCELLENT
Symmetry EXCELLENT
Fluorescence SLIGHT
Inscription(s) LG795635309
Comments: This Laboratory Grown Diamond was created by Chemical Vapor Deposition (CVD) growth process.
Indications of post-growth treatment.



IGI



May 29, 2026
IGI Report No LG795635309
CUT CORNERED RECT. MODIFIED BRILLIANT
3.00 CARATS
FANCY VIVID PINK
VVS 2
67.8%
63%
Medium
Pointed
EXCELLENT
EXCELLENT
SLIGHT
LG795635309

Comments: This Laboratory Grown Diamond was created by Chemical Vapor Deposition (CVD) growth process.
Indications of post-growth treatment.