



ELECTRONIC COPY

LG795635184  
Report verification at igi.org



May 21, 2026  
IGI Report Number **LG795635184**  
Description **LABORATORY GROWN DIAMOND**  
Shape and Cutting Style **CUT CORNERED SQUARE MODIFIED BRILLIANT**  
Measurements **7.18 X 7.07 X 4.90 MM**  
**GRADING RESULTS**  
Carat Weight **2.52 CARATS**  
Color Grade **FANCY VIVID YELLOW**  
Clarity Grade **VVS 2**

LABORATORY GROWN DIAMOND REPORT

May 21, 2026  
IGI Report Number **LG795635184**  
Description **LABORATORY GROWN DIAMOND**  
Shape and Cutting Style **CUT CORNERED SQUARE MODIFIED BRILLIANT**  
Measurements **7.18 X 7.07 X 4.90 MM**

GRADING RESULTS

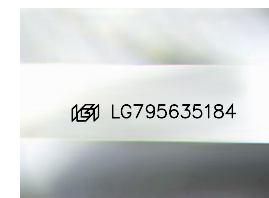
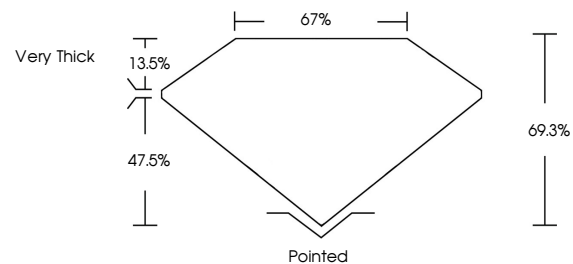
Carat Weight **2.52 CARATS**  
Color Grade **FANCY VIVID YELLOW**  
Clarity Grade **VVS 2**

ADDITIONAL GRADING INFORMATION

Polish **EXCELLENT**  
Symmetry **EXCELLENT**  
Fluorescence **NONE**  
Inscription(s) **IGI LG795635184**

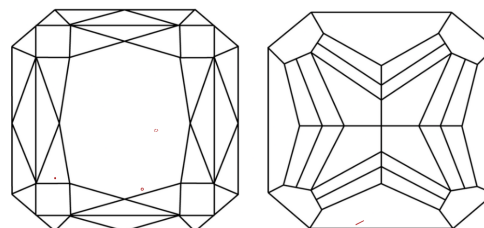
Comments: This Laboratory Grown Diamond was created by Chemical Vapor Deposition (CVD) growth process.

PROPORTIONS



Sample Image Used

CLARITY CHARACTERISTICS



KEY TO SYMBOLS

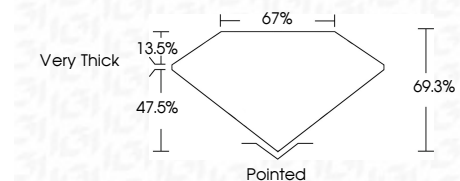
Red symbols indicate internal characteristics.  
Green symbols indicate external characteristics.

COLOR

D E F G H I J Faint Very Light Light

CLARITY

FL IF VVS<sup>1-2</sup> VS<sup>1-2</sup> SI<sup>1-2</sup> I<sup>1-3</sup>  
Flawless Internally Flawless Very Very Slightly Included Very Slightly Included Slightly Included Included



ADDITIONAL GRADING INFORMATION

Polish **EXCELLENT**  
Symmetry **EXCELLENT**  
Fluorescence **NONE**  
Inscription(s) **IGI LG795635184**  
Comments: This Laboratory Grown Diamond was created by Chemical Vapor Deposition (CVD) growth process.



IGI



May 21, 2026  
IGI Report No **LG795635184**  
**CUT CORNERED SQUARE MODIFIED BRILLIANT**  
**7.18 X 7.07 X 4.90 MM**  
Carat Weight **2.52 CARATS**  
Color Grade **FANCY VIVID YELLOW**  
Clarity Grade **VVS 2**  
Depth **47.5%**  
Table **13.5%**  
Girdle **Very Thick**  
Culet **Pointed**  
Polish **EXCELLENT**  
Symmetry **EXCELLENT**  
Fluorescence **NONE**  
Inscription(s) **IGI LG795635184**

Comments: This Laboratory Grown Diamond was created by Chemical Vapor Deposition (CVD) growth process.