



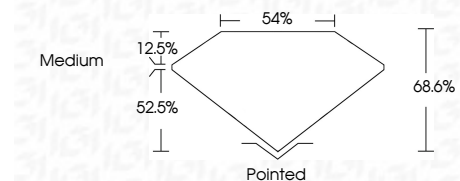
**ELECTRONIC COPY**

LG795634885  
Report verification at igi.org



May 27, 2026  
IGI Report Number **LG795634885**  
Description **LABORATORY GROWN DIAMOND**  
Shape and Cutting Style **TRAPEZE MODIFIED BRILLIANT**  
Measurements **9.86 X 6.36 X 4.36 MM**

**GRADING RESULTS**  
Carat Weight **2.08 CARATS**  
Color Grade **F**  
Clarity Grade **VVS 2**



**ADDITIONAL GRADING INFORMATION**  
Polish **EXCELLENT**  
Symmetry **EXCELLENT**  
Fluorescence **NONE**  
Inscription(s) **(IGI) LG795634885**  
Comments: This Laboratory Grown Diamond was created by Chemical Vapor Deposition (CVD) growth process. Type IIa



May 27, 2026  
IGI Report No LG795634885  
TRAPEZE MODIFIED BRILLIANT  
9.86 X 6.36 X 4.36 MM  
2.08 CARATS  
F  
VVS 2  
68.6%  
54%  
Medium  
Pointed  
EXCELLENT  
EXCELLENT  
NONE  
None  
(IGI) LG795634885  
Comments: This Laboratory Grown Diamond was created by Chemical Vapor Deposition (CVD) growth process. Type IIa

**LABORATORY GROWN DIAMOND REPORT**

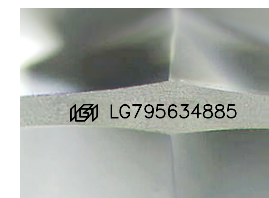
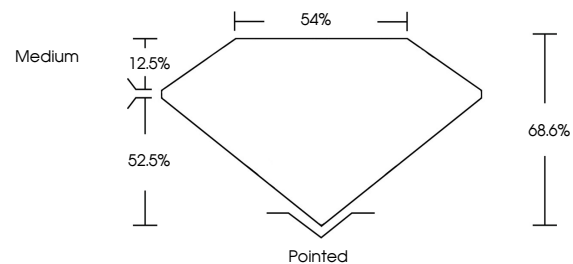
May 27, 2026  
IGI Report Number **LG795634885**  
Description **LABORATORY GROWN DIAMOND**  
Shape and Cutting Style **TRAPEZE MODIFIED BRILLIANT**  
Measurements **9.86 X 6.36 X 4.36 MM**

**GRADING RESULTS**  
Carat Weight **2.08 CARATS**  
Color Grade **F**  
Clarity Grade **VVS 2**

**ADDITIONAL GRADING INFORMATION**  
Polish **EXCELLENT**  
Symmetry **EXCELLENT**  
Fluorescence **NONE**

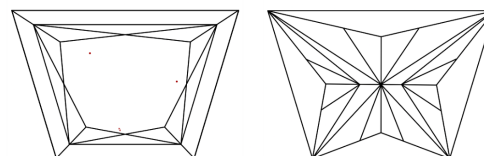
Inscription(s) **(IGI) LG795634885**  
Comments: This Laboratory Grown Diamond was created by Chemical Vapor Deposition (CVD) growth process. Type IIa

**PROPORTIONS**



Sample Image Used

**CLARITY CHARACTERISTICS**



**KEY TO SYMBOLS**

Red symbols indicate internal characteristics.  
Green symbols indicate external characteristics.

**COLOR**

D E F G H I J Faint Very Light Light

**CLARITY**

FL	IF	VVS <sup>1-2</sup>	VS <sup>1-2</sup>	SI <sup>1-2</sup>	I <sup>1-3</sup>
Flawless	Internally Flawless	Very Very Slightly Included	Very Slightly Included	Slightly Included	Included

