



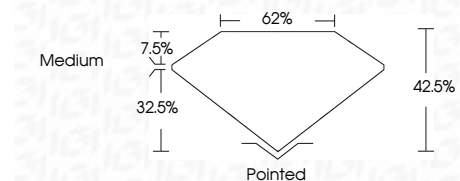
**ELECTRONIC COPY**

LG795634712  
Report verification at igi.org



May 26, 2026  
IGI Report Number **LG795634712**  
Description **LABORATORY GROWN DIAMOND**  
Shape and Cutting Style **TRAPEZE BRILLIANT CUT**  
Measurements **6.18 X 8.99 X 3.82 MM**

**GRADING RESULTS**  
Carat Weight **1.59 CARAT**  
Color Grade **E**  
Clarity Grade **VVS 2**



**ADDITIONAL GRADING INFORMATION**  
Polish **EXCELLENT**  
Symmetry **EXCELLENT**  
Fluorescence **NONE**  
Inscription(s) **IGI LG795634712**  
Comments: This Laboratory Grown Diamond was created by Chemical Vapor Deposition (CVD) growth process. Type IIa



May 26, 2026  
IGI Report No LG795634712  
TRAPEZE BRILLIANT CUT  
6.18 X 8.99 X 3.82 MM  
1.59 CARAT E  
VVS 2 42.5% 62%  
Medium  
Pointed  
EXCELLENT  
EXCELLENT  
NONE  
IGI LG795634712  
Comments: This Laboratory Grown Diamond was created by Chemical Vapor Deposition (CVD) growth process. Type IIa

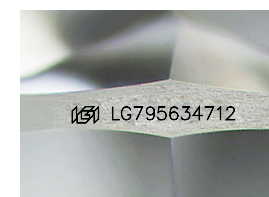
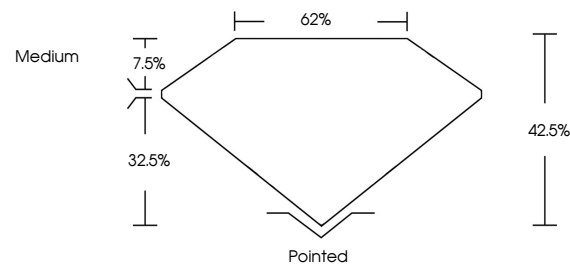
**LABORATORY GROWN DIAMOND REPORT**

May 26, 2026  
IGI Report Number **LG795634712**  
Description **LABORATORY GROWN DIAMOND**  
Shape and Cutting Style **TRAPEZE BRILLIANT CUT**  
Measurements **6.18 X 8.99 X 3.82 MM**

**GRADING RESULTS**  
Carat Weight **1.59 CARAT**  
Color Grade **E**  
Clarity Grade **VVS 2**

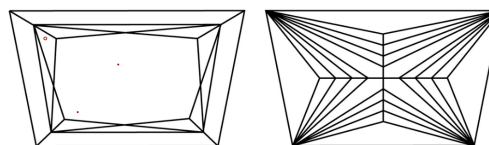
**ADDITIONAL GRADING INFORMATION**  
Polish **EXCELLENT**  
Symmetry **EXCELLENT**  
Fluorescence **NONE**  
Inscription(s) **IGI LG795634712**  
Comments: This Laboratory Grown Diamond was created by Chemical Vapor Deposition (CVD) growth process. Type IIa

**PROPORTIONS**



Sample Image Used

**CLARITY CHARACTERISTICS**



**KEY TO SYMBOLS**

Red symbols indicate internal characteristics.  
Green symbols indicate external characteristics.

**COLOR**

D E F G H I J Faint Very Light Light

**CLARITY**

FL	IF	VVS <sup>1-2</sup>	VS <sup>1-2</sup>	SI <sup>1-2</sup>	I <sup>1-3</sup>
Flawless	Internally Flawless	Very Very Slightly Included	Very Slightly Included	Slightly Included	Included

