



ELECTRONIC COPY

LG795630005
Report verification at igi.org



July 3, 2026
IGI Report Number LG795630005
Description LABORATORY GROWN DIAMOND
Shape and Cutting Style SQUARE CUSHION MODIFIED BRILLIANT
Measurements 6.68 X 6.40 X 4.30 MM
GRADING RESULTS
Carat Weight 1.50 CARAT
Color Grade FANCY VIVID GREEN
Clarity Grade VS 1

LABORATORY GROWN DIAMOND REPORT

July 3, 2026
IGI Report Number LG795630005
Description LABORATORY GROWN DIAMOND
Shape and Cutting Style SQUARE CUSHION MODIFIED BRILLIANT
Measurements 6.68 X 6.40 X 4.30 MM

GRADING RESULTS

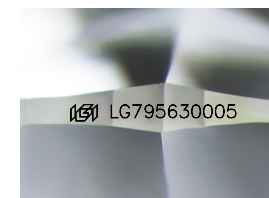
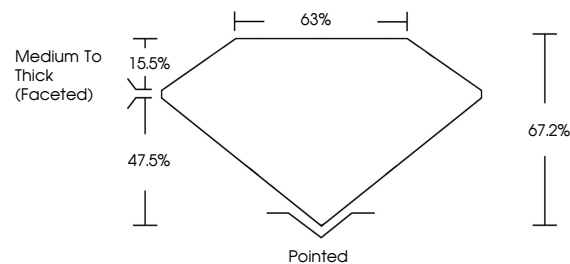
Carat Weight 1.50 CARAT
Color Grade FANCY VIVID GREEN
Clarity Grade VS 1

ADDITIONAL GRADING INFORMATION

Polish EXCELLENT
Symmetry EXCELLENT
Fluorescence NONE
Inscription(s) LG795630005

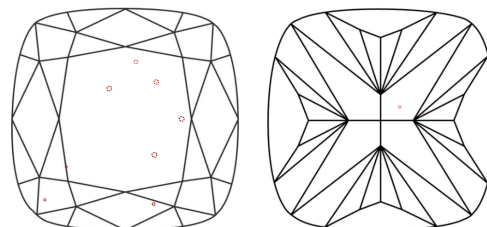
Comments: This Laboratory Grown Diamond was created by Chemical Vapor Deposition (CVD) growth process.
Indications of post-growth treatment.

PROPORTIONS



Sample Image Used

CLARITY CHARACTERISTICS



KEY TO SYMBOLS

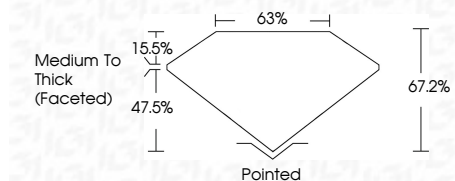
Red symbols indicate internal characteristics.
Green symbols indicate external characteristics.

COLOR

D E F G H I J Faint Very Light Light

CLARITY

FL IF VS 1-2 VS 1-2 SI 1-2 I 1-3
Flawless Internally Flawless Very Very Slightly Included Very Slightly Included Slightly Included Included



ADDITIONAL GRADING INFORMATION

Polish EXCELLENT
Symmetry EXCELLENT
Fluorescence NONE
Inscription(s) LG795630005
Comments: This Laboratory Grown Diamond was created by Chemical Vapor Deposition (CVD) growth process.
Indications of post-growth treatment.



IGI



July 3, 2026
IGI Report No. LG795630005
SQUARE CUSHION MODIFIED BRILLIANT
1.50 CARAT
6.68 X 6.40 X 4.30 MM
FANCY VIVID GREEN
VS 1
67.2%
65%
Medium To Thick (Faceted)
Pointed
EXCELLENT
EXCELLENT
NONE
None
IGI LG795630005
Comments: This Laboratory Grown Diamond was created by Chemical Vapor Deposition (CVD) growth process.
Indications of post-growth treatment.