



ELECTRONIC COPY

LG795629999 Report verification at igi.org



July 3, 2026 IGI Report Number LG795629999 Description LABORATORY GROWN DIAMOND Shape and Cutting Style SQUARE CUSHION MODIFIED BRILLIANT Measurements 7.08 X 6.76 X 4.38 MM GRADING RESULTS Carat Weight 1.70 CARAT Color Grade FANCY VIVID GREEN Clarity Grade VS 1

LABORATORY GROWN DIAMOND REPORT

July 3, 2026 IGI Report Number LG795629999 Description LABORATORY GROWN DIAMOND Shape and Cutting Style SQUARE CUSHION MODIFIED BRILLIANT Measurements 7.08 X 6.76 X 4.38 MM

GRADING RESULTS

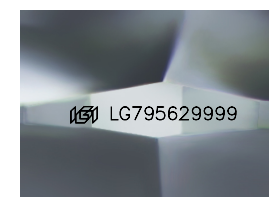
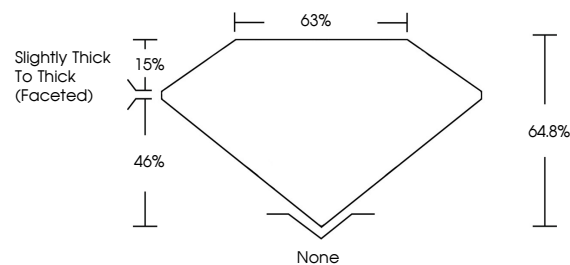
Carat Weight 1.70 CARAT Color Grade FANCY VIVID GREEN Clarity Grade VS 1

ADDITIONAL GRADING INFORMATION

Polish EXCELLENT Symmetry EXCELLENT Fluorescence NONE Inscription(s) IGI LG795629999

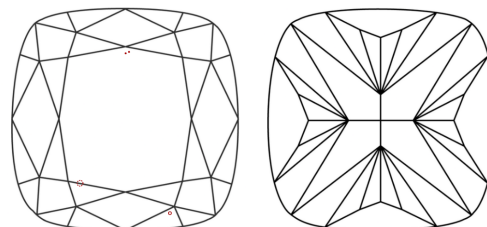
Comments: This Laboratory Grown Diamond was created by Chemical Vapor Deposition (CVD) growth process. Indications of post-growth treatment.

PROPORTIONS



Sample Image Used

CLARITY CHARACTERISTICS



KEY TO SYMBOLS

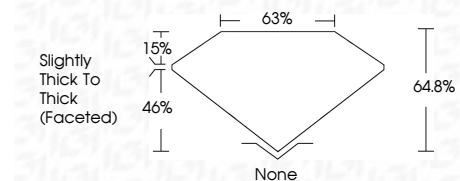
Red symbols indicate internal characteristics. Green symbols indicate external characteristics.

COLOR

D E F G H I J Faint Very Light Light

CLARITY

FL IF VS 1-2 VS 2-3 SI 1-2 I 1-3 Flawless Internally Flawless Very Very Slightly Included Very Slightly Included Slightly Included Included



ADDITIONAL GRADING INFORMATION

Polish EXCELLENT Symmetry EXCELLENT Fluorescence NONE Inscription(s) IGI LG795629999 Comments: This Laboratory Grown Diamond was created by Chemical Vapor Deposition (CVD) growth process. Indications of post-growth treatment.



July 3, 2026 IGI Report No LG795629999 SQUARE CUSHION MODIFIED BRILLIANT 7.08 X 6.76 X 4.38 MM 1.70 CARAT FANCY VIVID GREEN VS 1 64.8% 63% Slightly Thick To Thick (Faceted) None EXCELLENT EXCELLENT NONE NONE IGI LG795629999 Comments: This Laboratory Grown Diamond was created by Chemical Vapor Deposition (CVD) growth process. Indications of post-growth treatment.