



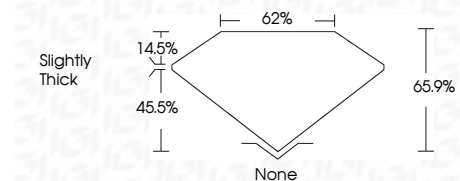
ELECTRONIC COPY

LG795629995
Report verification at igi.org



July 3, 2026
IGI Report Number **LG795629995**
Description **LABORATORY GROWN DIAMOND**
Shape and Cutting Style **OVAL POLYGON STEP CUT**
Measurements **9.42 X 6.31 X 4.16 MM**

GRADING RESULTS
Carat Weight **1.91 CARAT**
Color Grade **FANCY VIVID GREEN**
Clarity Grade **VS 1**



ADDITIONAL GRADING INFORMATION
Polish **EXCELLENT**
Symmetry **EXCELLENT**
Fluorescence **NONE**
Inscription(s) **IGI LG795629995**
Comments: This Laboratory Grown Diamond was created by Chemical Vapor Deposition (CVD) growth process. Indications of post-growth treatment.



July 3, 2026
IGI Report No **LG795629995**
OVAL POLYGON STEP CUT
9.42 X 6.31 X 4.16 MM
1.91 CARAT
FANCY VIVID GREEN
VS 1
65.9%
62%
Slightly Thick
None
EXCELLENT
EXCELLENT
NONE
IGI LG795629995
Comments: This Laboratory Grown Diamond was created by Chemical Vapor Deposition (CVD) growth process. Indications of post-growth treatment.

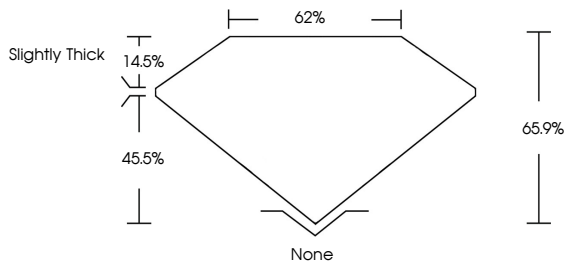
July 3, 2026
IGI Report Number **LG795629995**
Description **LABORATORY GROWN DIAMOND**
Shape and Cutting Style **OVAL POLYGON STEP CUT**
Measurements **9.42 X 6.31 X 4.16 MM**

GRADING RESULTS
Carat Weight **1.91 CARAT**
Color Grade **FANCY VIVID GREEN**
Clarity Grade **VS 1**

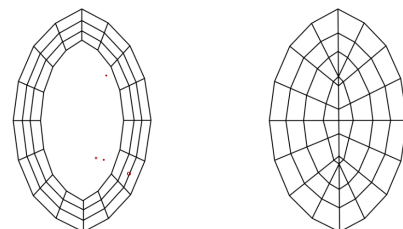
ADDITIONAL GRADING INFORMATION
Polish **EXCELLENT**
Symmetry **EXCELLENT**
Fluorescence **NONE**
Inscription(s) **IGI LG795629995**

Comments: This Laboratory Grown Diamond was created by Chemical Vapor Deposition (CVD) growth process. Indications of post-growth treatment.

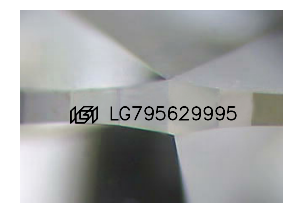
PROPORTIONS



CLARITY CHARACTERISTICS



KEY TO SYMBOLS
Red symbols indicate internal characteristics.
Green symbols indicate external characteristics.



Sample Image Used

COLOR

D	E	F	G	H	I	J	Faint	Very Light	Light
---	---	---	---	---	---	---	-------	------------	-------

CLARITY

FL	IF	VS ¹⁻²	VS ¹⁻²	SI ¹⁻²	I ¹⁻³
Flawless	Internally Flawless	Very Very Slightly Included	Very Slightly Included	Slightly Included	Included

