



ELECTRONIC COPY

LG795629990
Report verification at igi.org



July 3, 2026
IGI Report Number LG795629990
Description LABORATORY GROWN DIAMOND
Shape and Cutting Style CUT CORNERED RECTANGULAR MODIFIED BRILLIANT
Measurements 8.56 X 5.79 X 3.78 MM
GRADING RESULTS
Carat Weight 1.65 CARAT
Color Grade FANCY VIVID BLUE
Clarity Grade VS 1

LABORATORY GROWN DIAMOND REPORT

July 3, 2026
IGI Report Number LG795629990
Description LABORATORY GROWN DIAMOND
Shape and Cutting Style CUT CORNERED RECTANGULAR MODIFIED BRILLIANT
Measurements 8.56 X 5.79 X 3.78 MM

GRADING RESULTS

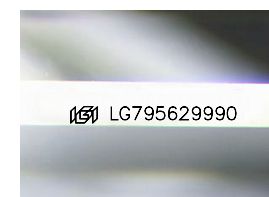
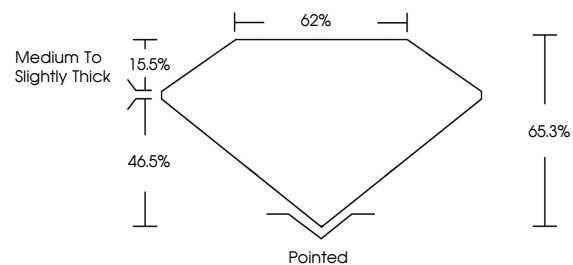
Carat Weight 1.65 CARAT
Color Grade FANCY VIVID BLUE
Clarity Grade VS 1

ADDITIONAL GRADING INFORMATION

Polish EXCELLENT
Symmetry EXCELLENT
Fluorescence NONE
Inscription(s) IGI LG795629990

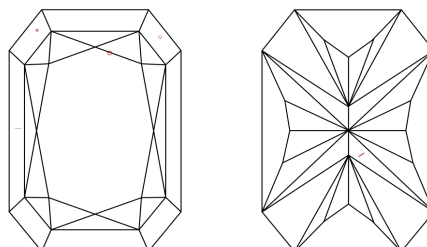
Comments: This Laboratory Grown Diamond was created by Chemical Vapor Deposition (CVD) growth process.
Indications of post-growth treatment.

PROPORTIONS



Sample Image Used

CLARITY CHARACTERISTICS



KEY TO SYMBOLS

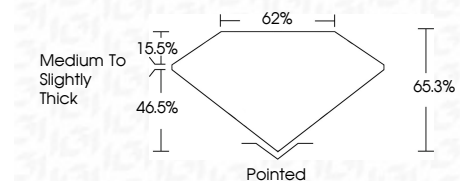
Red symbols indicate internal characteristics.
Green symbols indicate external characteristics.

COLOR

D E F G H I J Faint Very Light Light

CLARITY

FL IF VS 1-2 VS 2-3 SI 1-2 I 1-3
Flawless Internally Flawless Very Very Slightly Included Very Slightly Included Slightly Included Included



ADDITIONAL GRADING INFORMATION

Polish EXCELLENT
Symmetry EXCELLENT
Fluorescence NONE
Inscription(s) IGI LG795629990
Comments: This Laboratory Grown Diamond was created by Chemical Vapor Deposition (CVD) growth process.
Indications of post-growth treatment.



July 3, 2026
IGI Report No LG795629990
CUT CORNERED RECT. MODIFIED BRILLIANT
8.56 X 5.79 X 3.78 MM
1.65 CARAT
FANCY VIVID BLUE
VS 1
65.3%
62%
Medium to Slightly Thick
Pointed
EXCELLENT
EXCELLENT
NONE
IGI LG795629990
Comments: This Laboratory Grown Diamond was created by Chemical Vapor Deposition (CVD) growth process.
Indications of post-growth treatment.