



ELECTRONIC COPY

LG795628518
Report verification at igi.org



June 24, 2026
IGI Report Number **LG795628518**
Description **LABORATORY GROWN DIAMOND**
Shape and Cutting Style **PEAR ROSE CUT**
Measurements **9.52 X 6.82 X 2.04 MM**
GRADING RESULTS
Carat Weight **1.04 CARAT**
Color Grade **FANCY VIVID PINK**
Clarity Grade **VVS 2**

June 24, 2026
IGI Report Number **LG795628518**
Description **LABORATORY GROWN DIAMOND**
Shape and Cutting Style **PEAR ROSE CUT**
Measurements **9.52 X 6.82 X 2.04 MM**

GRADING RESULTS

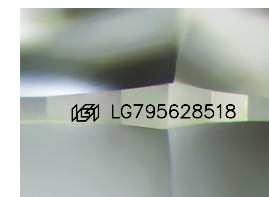
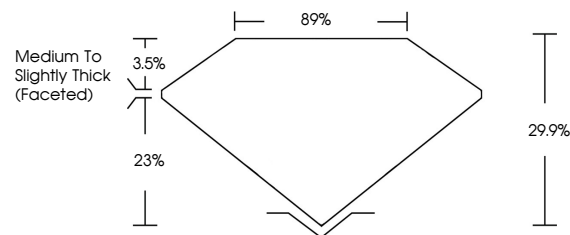
Carat Weight **1.04 CARAT**
Color Grade **FANCY VIVID PINK**
Clarity Grade **VVS 2**

ADDITIONAL GRADING INFORMATION

Polish **VERY GOOD**
Symmetry **VERY GOOD**
Fluorescence **SLIGHT**
Inscription(s) **IGI LG795628518**

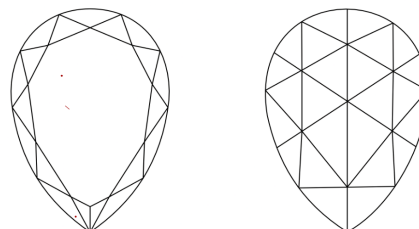
Comments: This Laboratory Grown Diamond was created by Chemical Vapor Deposition (CVD) growth process.
Indications of post-growth treatment.

PROPORTIONS



Sample Image Used

CLARITY CHARACTERISTICS



KEY TO SYMBOLS

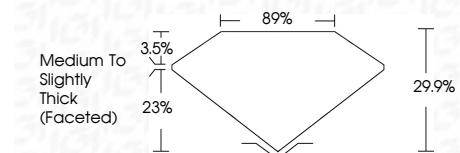
Red symbols indicate internal characteristics.
Green symbols indicate external characteristics.

COLOR

D E F G H I J Faint Very Light Light

CLARITY

FL	IF	VVS ¹⁻²	VS ¹⁻²	SI ¹⁻²	I ¹⁻³
Flawless	Internally Flawless	Very Very Slightly Included	Very Slightly Included	Slightly Included	Included



ADDITIONAL GRADING INFORMATION

Polish **VERY GOOD**
Symmetry **VERY GOOD**
Fluorescence **SLIGHT**
Inscription(s) **IGI LG795628518**
Comments: This Laboratory Grown Diamond was created by Chemical Vapor Deposition (CVD) growth process.
Indications of post-growth treatment.



June 24, 2026
IGI Report No. LG795628518
PEAR ROSE CUT

1.04 CARAT
FANCY VIVID PINK
VVS 2

9.52 X 6.82 X 2.04 MM

Color Grade
Clarity Grade
Depth
Table
Girdle
Medium to Slightly Thick (Faceted)

Culet
Polish
Symmetry
Fluorescence
Inscription(s)

VERY GOOD
VERY GOOD
SLIGHT
IGI LG795628518

Comments: This Laboratory Grown Diamond was created by Chemical Vapor Deposition (CVD) growth process.
Indications of post-growth treatment.