



**ELECTRONIC COPY**

LG795628516  
Report verification at igi.org



June 24, 2026  
IGI Report Number **LG795628516**  
Description **LABORATORY GROWN DIAMOND**  
Shape and Cutting Style **PEAR ROSE CUT**  
Measurements **9.66 X 6.71 X 1.96 MM**  
**GRADING RESULTS**  
Carat Weight **1.05 CARAT**  
Color Grade **FANCY VIVID PINK**  
Clarity Grade **VVS 2**

**LABORATORY GROWN DIAMOND REPORT**

June 24, 2026  
IGI Report Number **LG795628516**  
Description **LABORATORY GROWN DIAMOND**  
Shape and Cutting Style **PEAR ROSE CUT**  
Measurements **9.66 X 6.71 X 1.96 MM**

**GRADING RESULTS**

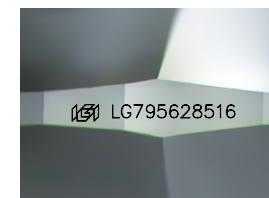
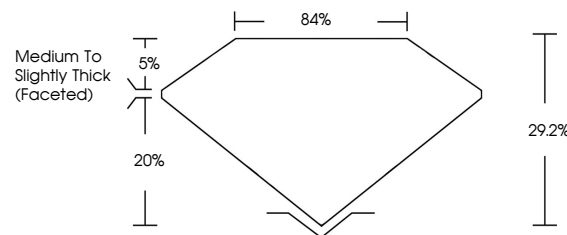
Carat Weight **1.05 CARAT**  
Color Grade **FANCY VIVID PINK**  
Clarity Grade **VVS 2**

**ADDITIONAL GRADING INFORMATION**

Polish **VERY GOOD**  
Symmetry **VERY GOOD**  
Fluorescence **SLIGHT**  
Inscription(s) **IGI LG795628516**

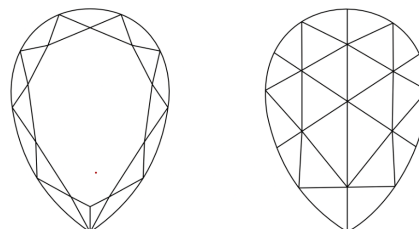
Comments: This Laboratory Grown Diamond was created by Chemical Vapor Deposition (CVD) growth process.  
Indications of post-growth treatment.

**PROPORTIONS**



Sample Image Used

**CLARITY CHARACTERISTICS**



**KEY TO SYMBOLS**

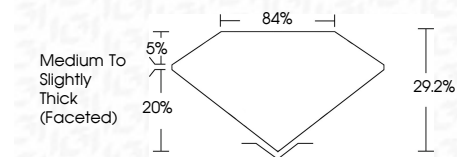
Red symbols indicate internal characteristics.  
Green symbols indicate external characteristics.

**COLOR**

D E F G H I J Faint Very Light Light

**CLARITY**

FL	IF	VVS <sup>1-2</sup>	VS <sup>1-2</sup>	SI <sup>1-2</sup>	I <sup>1-3</sup>
Flawless	Internally Flawless	Very Very Slightly Included	Very Slightly Included	Slightly Included	Included



**ADDITIONAL GRADING INFORMATION**

Polish **VERY GOOD**  
Symmetry **VERY GOOD**  
Fluorescence **SLIGHT**  
Inscription(s) **IGI LG795628516**  
Comments: This Laboratory Grown Diamond was created by Chemical Vapor Deposition (CVD) growth process.  
Indications of post-growth treatment.



June 24, 2026  
IGI Report No. LG795628516  
**PEAR ROSE CUT**  
1.05 CARAT  
9.66 X 6.71 X 1.96 MM  
FANCY VIVID PINK  
VVS 2  
29.2%  
84%  
Medium to Slightly Thick (Faceted)  
VERY GOOD  
VERY GOOD  
SLIGHT  
IGI LG795628516  
Comments: This Laboratory Grown Diamond was created by Chemical Vapor Deposition (CVD) growth process.  
Indications of post-growth treatment.