



June 24, 2026

IGI Report Number LG795628511
ROUND ROSE CUT
LABORATORY GROWN DIAMOND
8.32 - 8.36 X 1.35 MM

Carat Weight 0.84 CARAT
Color Grade FANCY VIVID PINK
Clarity Grade VVS 2
Polish VERY GOOD
Symmetry VERY GOOD
Fluorescence STRONG
Inscription(s) IGI LG795628511

Comments: This Laboratory Grown Diamond was created by Chemical Vapor Deposition (CVD) growth process. Indications of post-growth treatment.

LABORATORY GROWN DIAMOND REPORT

June 24, 2026
IGI Report Number **LG795628511**
Description **LABORATORY GROWN DIAMOND**
Shape and Cutting Style **ROUND ROSE CUT**
Measurements **8.32 - 8.36 X 1.35 MM**

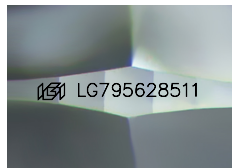
GRADING RESULTS

Carat Weight 0.84 CARAT
Color Grade FANCY VIVID PINK
Clarity Grade VVS 2

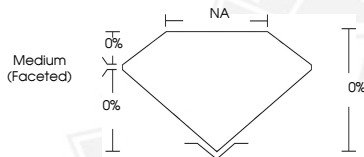
ADDITIONAL GRADING INFORMATION

Polish VERY GOOD
Symmetry VERY GOOD
Fluorescence STRONG
Inscription(s) IGI LG795628511

Comments: This Laboratory Grown Diamond was created by Chemical Vapor Deposition (CVD) growth process. Indications of post-growth treatment.



Sample Image Used



June 24, 2026

IGI Report Number LG795628511
ROUND ROSE CUT
LABORATORY GROWN DIAMOND
8.32 - 8.36 X 1.35 MM

Carat Weight 0.84 CARAT
Color Grade FANCY VIVID PINK
Clarity Grade VVS 2
Polish VERY GOOD
Symmetry VERY GOOD
Fluorescence STRONG
Inscription(s) IGI LG795628511

Comments: This Laboratory Grown Diamond was created by Chemical Vapor Deposition (CVD) growth process. Indications of post-growth treatment.



THIS DOCUMENT WAS PRODUCED WITH THE FOLLOWING SECURITY MEASURES: SPECIAL DOCUMENT PAPER, INK SCREENS, WATERMARK, BACKGROUND DESIGNS, HOLOGRAM AND OTHER SECURITY FEATURES NOT LISTED AND DO EXCEED DOCUMENT SECURITY INDUSTRY GUIDELINES.