



June 24, 2026

IGI Report Number **LG795628508**

**OVAL ROSE CUT**

**LABORATORY GROWN DIAMOND**

**7.86 X 5.53 X 1.74 MM**

Carat Weight **0.74 CARAT**

Color Grade **FANCY VIVID PINK**

Clarity Grade **VS 1**

Polish **EXCELLENT**

Symmetry **VERY GOOD**

Fluorescence **STRONG**

Inscription(s) **IGI LG795628508**

Comments: This Laboratory Grown Diamond was created by Chemical Vapor Deposition (CVD) growth process. Indications of post-growth treatment.

**LABORATORY GROWN DIAMOND REPORT**

June 24, 2026

IGI Report Number

**LG795628508**

Description

**LABORATORY GROWN DIAMOND**

Shape and Cutting Style

**OVAL ROSE CUT**

Measurements

**7.86 X 5.53 X 1.74 MM**

**GRADING RESULTS**

Carat Weight

**0.74 CARAT**

Color Grade

**FANCY VIVID PINK**

Clarity Grade

**VS 1**

**ADDITIONAL GRADING INFORMATION**

Polish

**EXCELLENT**

Symmetry

**VERY GOOD**

Fluorescence

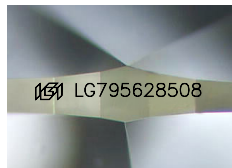
**STRONG**

Inscription(s)

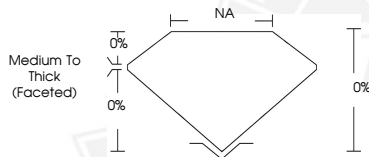
**IGI LG795628508**

Comments: This Laboratory Grown Diamond was created by Chemical Vapor Deposition (CVD) growth process.

Indications of post-growth treatment.



Sample Image Used



June 24, 2026

IGI Report Number **LG795628508**

**OVAL ROSE CUT**

**LABORATORY GROWN DIAMOND**

**7.86 X 5.53 X 1.74 MM**

Carat Weight **0.74 CARAT**

Color Grade **FANCY VIVID PINK**

Clarity Grade **VS 1**

Polish **EXCELLENT**

Symmetry **VERY GOOD**

Fluorescence **STRONG**

Inscription(s) **IGI LG795628508**

Comments: This Laboratory Grown Diamond was created by Chemical Vapor Deposition (CVD) growth process. Indications of post-growth treatment.



THIS DOCUMENT WAS PRODUCED WITH THE FOLLOWING SECURITY MEASURES: SPECIAL DOCUMENT PAPER, INK SCREENS, WATERMARK, BACKGROUND DESIGNS, HOLOGRAM AND OTHER SECURITY FEATURES NOT LISTED AND DO EXCEED DOCUMENT SECURITY INDUSTRY GUIDELINES.