



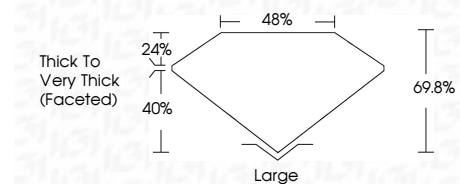
**ELECTRONIC COPY**

LG795627180  
Report verification at igi.org



June 22, 2026  
IGI Report Number **LG795627180**  
Description **LABORATORY GROWN DIAMOND**  
Shape and Cutting Style **ANTIQUÉ CUSHION CUT**  
Measurements **7.15 X 6.82 X 4.76 MM**

**GRADING RESULTS**  
Carat Weight **1.65 CARAT**  
Color Grade **M**  
Clarity Grade **VS 1**



**ADDITIONAL GRADING INFORMATION**  
Polish **EXCELLENT**  
Symmetry **EXCELLENT**  
Fluorescence **NONE**  
Inscription(s) **IGI LG795627180**  
Comments: This Laboratory Grown Diamond was created by Chemical Vapor Deposition (CVD) growth process.  
Type IIa  
Faint Brown



June 22, 2026  
IGI Report No **LG795627180**  
**ANTIQUÉ CUSHION CUT**  
Carat Weight **1.65 CARAT**  
Color Grade **M**  
Clarity Grade **VS 1**  
Depth **69.8%**  
Table **48%**  
Girdle **Thick to Very Thick (Faceted)**  
Culet **Large**  
Polish **EXCELLENT**  
Symmetry **EXCELLENT**  
Fluorescence **NONE**  
Inscription(s) **IGI LG795627180**  
Comments: This Laboratory Grown Diamond was created by Chemical Vapor Deposition (CVD) growth process.  
Type IIa  
Faint Brown

**LABORATORY GROWN DIAMOND REPORT**

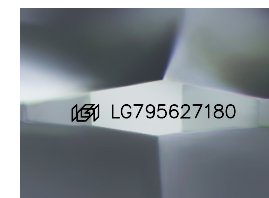
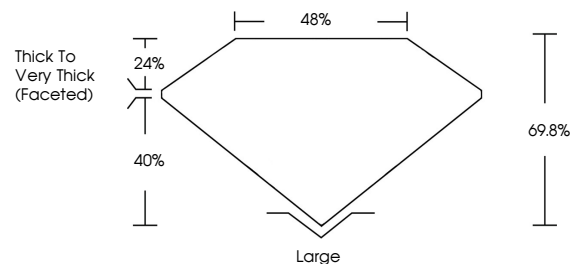
June 22, 2026  
IGI Report Number **LG795627180**  
Description **LABORATORY GROWN DIAMOND**  
Shape and Cutting Style **ANTIQUÉ CUSHION CUT**  
Measurements **7.15 X 6.82 X 4.76 MM**

**GRADING RESULTS**  
Carat Weight **1.65 CARAT**  
Color Grade **M**  
Clarity Grade **VS 1**

**ADDITIONAL GRADING INFORMATION**  
Polish **EXCELLENT**  
Symmetry **EXCELLENT**  
Fluorescence **NONE**  
Inscription(s) **IGI LG795627180**

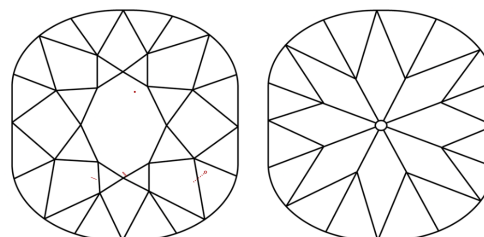
Comments: This Laboratory Grown Diamond was created by Chemical Vapor Deposition (CVD) growth process.  
Type IIa  
Faint Brown

**PROPORTIONS**



Sample Image Used

**CLARITY CHARACTERISTICS**



**KEY TO SYMBOLS**

Red symbols indicate internal characteristics.  
Green symbols indicate external characteristics.

**COLOR**

D E F G H I J Faint Very Light Light

**CLARITY**

FL	IF	VS <sup>1-2</sup>	VS <sup>1-2</sup>	SI <sup>1-2</sup>	I <sup>1-3</sup>
Flawless	Internally Flawless	Very Very Slightly Included	Very Slightly Included	Slightly Included	Included

