



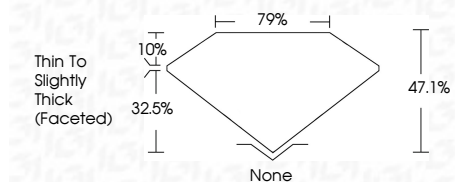
ELECTRONIC COPY

LG795626794
Report verification at igi.org



June 16, 2026
IGI Report Number **LG795626794**
Description **LABORATORY GROWN DIAMOND**
Shape and Cutting Style **CUSHION MIXED CUT**
Measurements **7.66 X 5.37 X 2.53 MM**

GRADING RESULTS
Carat Weight **1.02 CARAT**
Color Grade **FANCY VIVID RED**
Clarity Grade **VS 2**



ADDITIONAL GRADING INFORMATION
Polish **EXCELLENT**
Symmetry **VERY GOOD**
Fluorescence **SLIGHT**
Inscription(s) **(IGI) LG795626794**
Comments: This Laboratory Grown Diamond was created by Chemical Vapor Deposition (CVD) growth process. Indications of post-growth treatment.
Secondary color: Orange



June 16, 2026
IGI Report No LG795626794
CUSHION MIXED CUT
1.02 CARAT
Carat Weight
Color Grade **FANCY VIVID RED**
Clarity Grade **VS 2**
Depth **47.1%**
Table **79%**
Girdle **Thin To Slightly Thick (Faceted)**
Culet **None**
Polish **EXCELLENT**
Symmetry **VERY GOOD**
Fluorescence **SLIGHT**
Inscription(s) **(IGI) LG795626794**
Comments: This Laboratory Grown Diamond was created by Chemical Vapor Deposition (CVD) growth process. Indications of post-growth treatment. Secondary color: Orange

LABORATORY GROWN DIAMOND REPORT

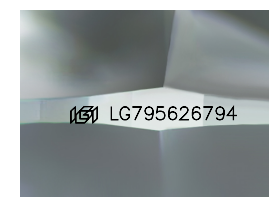
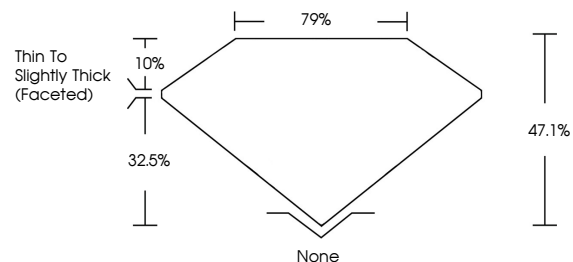
June 16, 2026
IGI Report Number **LG795626794**
Description **LABORATORY GROWN DIAMOND**
Shape and Cutting Style **CUSHION MIXED CUT**
Measurements **7.66 X 5.37 X 2.53 MM**

GRADING RESULTS
Carat Weight **1.02 CARAT**
Color Grade **FANCY VIVID RED**
Clarity Grade **VS 2**

ADDITIONAL GRADING INFORMATION
Polish **EXCELLENT**
Symmetry **VERY GOOD**
Fluorescence **SLIGHT**
Inscription(s) **(IGI) LG795626794**

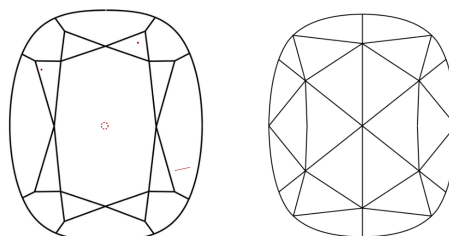
Comments: This Laboratory Grown Diamond was created by Chemical Vapor Deposition (CVD) growth process. Indications of post-growth treatment.
Secondary color: Orange

PROPORTIONS



Sample Image Used

CLARITY CHARACTERISTICS



KEY TO SYMBOLS

Red symbols indicate internal characteristics.
Green symbols indicate external characteristics.

COLOR

D E F G H I J Faint Very Light Light

CLARITY

FL	IF	VS ¹⁻²	VS ¹⁻²	SI ¹⁻²	I ¹⁻³
Flawless	Internally Flawless	Very Very Slightly Included	Very Slightly Included	Slightly Included	Included

