



LABORATORY GROWN DIAMOND REPORT

June 11, 2026
 IGI Report Number **LG795626787**
 Description **LABORATORY GROWN DIAMOND**
 Shape and Cutting Style **HEART MODIFIED BRILLIANT**
 Measurements **5.04 X 5.39 X 2.79 MM**

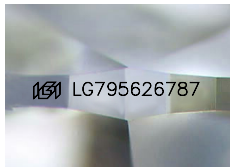
GRADING RESULTS

Carat Weight **0.51 CARAT**
 Color Grade **FANCY LIGHT YELLOW**
 Clarity Grade **VVS 2**

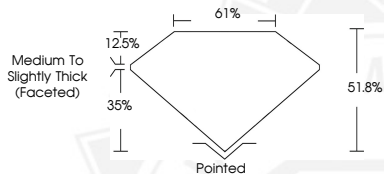
ADDITIONAL GRADING INFORMATION

Polish **VERY GOOD**
 Symmetry **VERY GOOD**
 Fluorescence **NONE**
 Inscription(s) **IGI LG795626787**

Comments: This Laboratory Grown Diamond was created by Chemical Vapor Deposition (CVD) growth process.



Sample Image Used



June 11, 2026
 IGI Report Number **LG795626787**
 HEART MODIFIED BRILLIANT
 LABORATORY GROWN DIAMOND
 5.04 X 5.39 X 2.79 MM
 Carat Weight **0.51 CARAT**
 Color Grade **FANCY LIGHT YELLOW**
 Clarity Grade **VVS 2**
 Polish **VERY GOOD**
 Symmetry **VERY GOOD**
 Fluorescence **NONE**
 Inscription(s) **IGI LG795626787**
 Comments: This Laboratory Grown Diamond was created by Chemical Vapor Deposition (CVD) growth process.



June 11, 2026
 IGI Report Number **LG795626787**
 HEART MODIFIED BRILLIANT
 LABORATORY GROWN DIAMOND
 5.04 X 5.39 X 2.79 MM
 Carat Weight **0.51 CARAT**
 Color Grade **FANCY LIGHT YELLOW**
 Clarity Grade **VVS 2**
 Polish **VERY GOOD**
 Symmetry **VERY GOOD**
 Fluorescence **NONE**
 Inscription(s) **IGI LG795626787**
 Comments: This Laboratory Grown Diamond was created by Chemical Vapor Deposition (CVD) growth process.



THIS DOCUMENT WAS PRODUCED WITH THE FOLLOWING SECURITY MEASURES: SPECIAL DOCUMENT PAPER, INK SCREENS, WATERMARK, BACKGROUND DESIGNS, HOLOGRAM AND OTHER SECURITY FEATURES NOT LISTED AND DO EXCEED DOCUMENT SECURITY INDUSTRY GUIDELINES.