



**ELECTRONIC COPY**

LG795626481  
Report verification at igi.org



June 10, 2026

IGI Report Number **LG795626481**

Description **LABORATORY GROWN DIAMOND**

Shape and Cutting Style **CUT CORNERED  
RECTANGULAR MODIFIED  
BRILLIANT**

Measurements **8.34 X 5.67 X 3.79 MM**

**GRADING RESULTS**

Carat Weight **1.75 CARAT**

Color Grade **FANCY YELLOW**

Clarity Grade **VVS 2**

**LABORATORY GROWN DIAMOND REPORT**

June 10, 2026

IGI Report Number **LG795626481**

Description **LABORATORY GROWN DIAMOND**

Shape and Cutting Style **CUT CORNERED RECTANGULAR  
MODIFIED BRILLIANT**

Measurements **8.34 X 5.67 X 3.79 MM**

**GRADING RESULTS**

Carat Weight **1.75 CARAT**

Color Grade **FANCY YELLOW**

Clarity Grade **VVS 2**

**ADDITIONAL GRADING INFORMATION**

Polish **EXCELLENT**

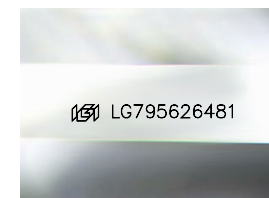
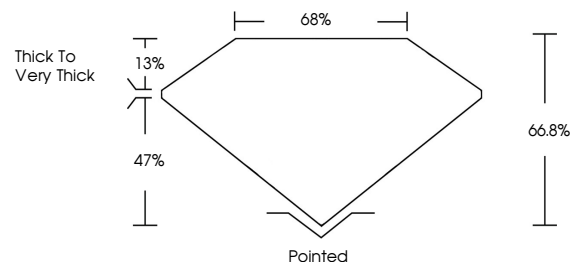
Symmetry **EXCELLENT**

Fluorescence **NONE**

Inscription(s) **IGI LG795626481**

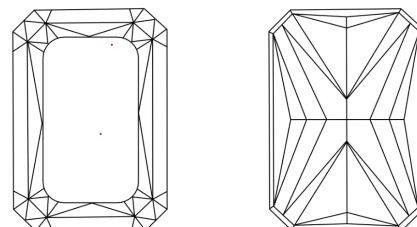
Comments: This Laboratory Grown Diamond was created by Chemical Vapor Deposition (CVD) growth process.

**PROPORTIONS**



Sample Image Used

**CLARITY CHARACTERISTICS**



**KEY TO SYMBOLS**

Red symbols indicate internal characteristics.  
Green symbols indicate external characteristics.

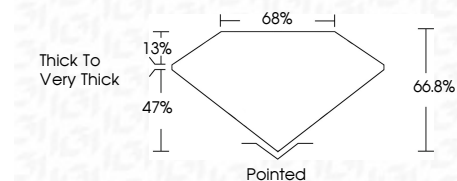
**COLOR**

D E F G H I J Faint Very Light Light

**CLARITY**

FL IF VVS<sup>1-2</sup> VS<sup>1-2</sup> SI<sup>1-2</sup> I<sup>1-3</sup>

Flawless Internally Flawless Very Very Slightly Included Very Slightly Included Slightly Included Included



**ADDITIONAL GRADING INFORMATION**

Polish **EXCELLENT**

Symmetry **EXCELLENT**

Fluorescence **NONE**

Inscription(s) **IGI LG795626481**

Comments: This Laboratory Grown Diamond was created by Chemical Vapor Deposition (CVD) growth process.



**IGI**



June 10, 2026  
IGI Report No LG795626481  
CUT CORNERED RECT. MODIFIED BRILLIANT  
8.34 X 5.67 X 3.79 MM  
Carat Weight 1.75 CARAT  
Color Grade FANCY YELLOW  
Clarity Grade VVS 2  
Depth 66.8%  
Table 47%  
Girdle Thick to Very Thick  
Culet Pointed  
Polish EXCELLENT  
Symmetry EXCELLENT  
Fluorescence NONE  
Inscription(s) IGI LG795626481  
Comments: This Laboratory Grown Diamond was created by Chemical Vapor Deposition (CVD) growth process.