



ELECTRONIC COPY

LG795626255
Report verification at igi.org



June 10, 2026
IGI Report Number **LG795626255**
Description **LABORATORY GROWN DIAMOND**
Shape and Cutting Style **CUSHION MODIFIED BRILLIANT**
Measurements **7.26 X 4.98 X 3.42 MM**
GRADING RESULTS
Carat Weight **1.12 CARAT**
Color Grade **FANCY VIVID BROWNISH PINK**
Clarity Grade **VVS 2**

LABORATORY GROWN DIAMOND REPORT

June 10, 2026
IGI Report Number **LG795626255**
Description **LABORATORY GROWN DIAMOND**
Shape and Cutting Style **CUSHION MODIFIED BRILLIANT**
Measurements **7.26 X 4.98 X 3.42 MM**

GRADING RESULTS

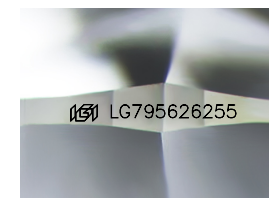
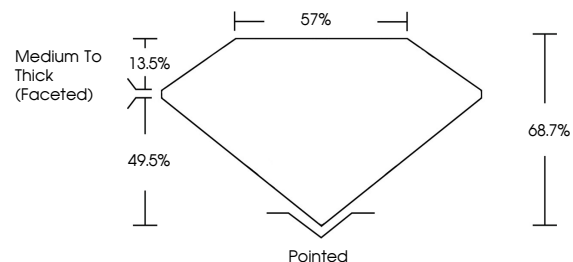
Carat Weight **1.12 CARAT**
Color Grade **FANCY VIVID BROWNISH PINK**
Clarity Grade **VVS 2**

ADDITIONAL GRADING INFORMATION

Polish **EXCELLENT**
Symmetry **EXCELLENT**
Fluorescence **STRONG**
Inscription(s) **IGI LG795626255**

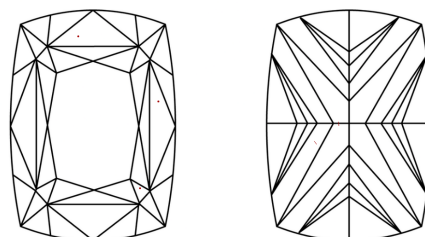
Comments: This Laboratory Grown Diamond was created by Chemical Vapor Deposition (CVD) growth process.
Indications of post-growth treatment.

PROPORTIONS



Sample Image Used

CLARITY CHARACTERISTICS



KEY TO SYMBOLS

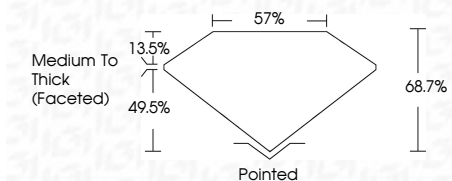
Red symbols indicate internal characteristics.
Green symbols indicate external characteristics.

COLOR

D E F G H I J Faint Very Light Light

CLARITY

FL IF VVS¹⁻² VS¹⁻² SI¹⁻² I¹⁻³
Flawless Internally Flawless Very Very Slightly Included Very Slightly Included Slightly Included Included



ADDITIONAL GRADING INFORMATION

Polish **EXCELLENT**
Symmetry **EXCELLENT**
Fluorescence **STRONG**
Inscription(s) **IGI LG795626255**
Comments: This Laboratory Grown Diamond was created by Chemical Vapor Deposition (CVD) growth process.
Indications of post-growth treatment.



June 10, 2026
IGI Report No **LG795626255**
CUSHION MODIFIED BRILLIANT

1.12 CARAT
FANCY VIVID BROWNISH PINK
VVS 2
68.7%
57%
Medium To Thick (Faceted)
Pointed
EXCELLENT
EXCELLENT
STRONG
IGI LG795626255

Comments: This Laboratory Grown Diamond was created by Chemical Vapor Deposition (CVD) growth process.
Indications of post-growth treatment.