



May 20, 2026

IGI Report Number **LG795625243**

**HEART BRILLIANT
LABORATORY GROWN DIAMOND**

5.72 X 6.37 X 3.70 MM

Carat Weight **0.81 CARAT**
Color Grade **D**
Clarity Grade **VVS 1**
Polish **EXCELLENT**
Symmetry **EXCELLENT**
Fluorescence **NONE**
Inscription(s) **IGI LG795625243**

Comments: As Grown - No indication of post-growth treatment. This Laboratory Grown Diamond was created by High Pressure High Temperature (HPHT) growth process. Type II

LABORATORY GROWN DIAMOND REPORT

May 20, 2026
IGI Report Number **LG795625243**
Description **LABORATORY GROWN DIAMOND**
Shape and Cutting Style **HEART BRILLIANT**
Measurements **5.72 X 6.37 X 3.70 MM**

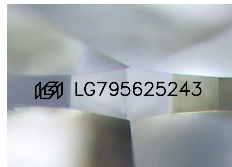
GRADING RESULTS

Carat Weight **0.81 CARAT**
Color Grade **D**
Clarity Grade **VVS 1**

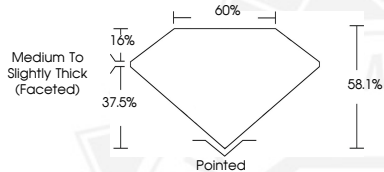
ADDITIONAL GRADING INFORMATION

Polish **EXCELLENT**
Symmetry **EXCELLENT**
Fluorescence **NONE**
Inscription(s) **IGI LG795625243**

Comments: As Grown - No indication of post-growth treatment. This Laboratory Grown Diamond was created by High Pressure High Temperature (HPHT) growth process. Type II



Sample Image Used



May 20, 2026

IGI Report Number **LG795625243**

**HEART BRILLIANT
LABORATORY GROWN DIAMOND**

5.72 X 6.37 X 3.70 MM

Carat Weight **0.81 CARAT**
Color Grade **D**
Clarity Grade **VVS 1**
Polish **EXCELLENT**
Symmetry **EXCELLENT**
Fluorescence **NONE**
Inscription(s) **IGI LG795625243**

Comments: As Grown - No indication of post-growth treatment. This Laboratory Grown Diamond was created by High Pressure High Temperature (HPHT) growth process. Type II



THIS DOCUMENT WAS PRODUCED WITH THE FOLLOWING SECURITY MEASURES: SPECIAL DOCUMENT PAPER, INK SCREENS, WATERMARK, BACKGROUND DESIGNS, HOLOGRAM AND OTHER SECURITY FEATURES NOT LISTED AND DO EXCEED DOCUMENT SECURITY INDUSTRY GUIDELINES.