



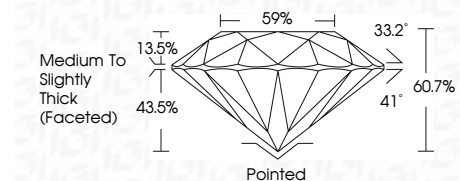
ELECTRONIC COPY

LG795624843
Report verification at igi.org



May 18, 2026
IGI Report Number **LG795624843**
Description **LABORATORY GROWN DIAMOND**
Shape and Cutting Style **ROUND BRILLIANT**
Measurements **8.12 - 8.20 X 4.95 MM**

GRADING RESULTS
Carat Weight **2.02 CARATS**
Color Grade **D**
Clarity Grade **VVS 2**
Cut Grade **IDEAL**



ADDITIONAL GRADING INFORMATION
Polish **EXCELLENT**
Symmetry **EXCELLENT**
Fluorescence **NONE**
Inscription(s) **IGI LG795624843**
Comments: This Laboratory Grown Diamond was created by Chemical Vapor Deposition (CVD) growth process. Type IIa



May 18, 2026
IGI Report No LG795624843
ROUND BRILLIANT
8.12 - 8.20 X 4.95 MM
2.02 CARATS
D
VVS 2
IDEAL
60.7%
59%
Medium To Slightly Thick (Faceted)
Pointed
EXCELLENT
EXCELLENT
NONE
IGI LG795624843
Comments: This Laboratory Grown Diamond was created by Chemical Vapor Deposition (CVD) growth process. Type IIa

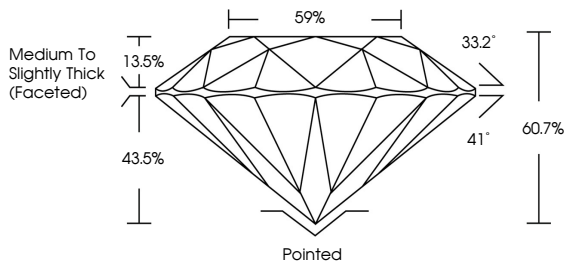
May 18, 2026
IGI Report Number **LG795624843**
Description **LABORATORY GROWN DIAMOND**
Shape and Cutting Style **ROUND BRILLIANT**
Measurements **8.12 - 8.20 X 4.95 MM**

GRADING RESULTS
Carat Weight **2.02 CARATS**
Color Grade **D**
Clarity Grade **VVS 2**
Cut Grade **IDEAL**

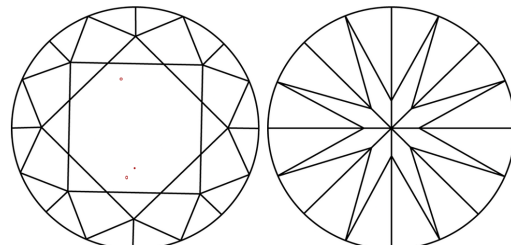
ADDITIONAL GRADING INFORMATION
Polish **EXCELLENT**
Symmetry **EXCELLENT**
Fluorescence **NONE**
Inscription(s) **IGI LG795624843**

Comments: This Laboratory Grown Diamond was created by Chemical Vapor Deposition (CVD) growth process. Type IIa

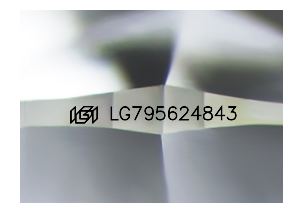
PROPORTIONS



CLARITY CHARACTERISTICS



KEY TO SYMBOLS
Red symbols indicate internal characteristics.
Green symbols indicate external characteristics.



Sample Image Used

COLOR

D	E	F	G	H	I	J	Faint	Very Light	Light
---	---	---	---	---	---	---	-------	------------	-------

CLARITY

FL	IF	VVS ¹⁻²	VS ¹⁻²	SI ¹⁻²	I ¹⁻³
Flawless	Internally Flawless	Very Very Slightly Included	Very Slightly Included	Slightly Included	Included

