



ELECTRONIC COPY

LG795624484
Report verification at igi.org



May 18, 2026

IGI Report Number **LG795624484**

Description **LABORATORY GROWN DIAMOND**

Shape and Cutting Style **PEAR BRILLIANT**

Measurements **11.00 X 6.48 X 4.12 MM**

GRADING RESULTS

Carat Weight **1.72 CARAT**

Color Grade **D**

Clarity Grade **VVS 2**

May 18, 2026
IGI Report Number **LG795624484**
Description **LABORATORY GROWN DIAMOND**
Shape and Cutting Style **PEAR BRILLIANT**
Measurements **11.00 X 6.48 X 4.12 MM**

GRADING RESULTS

Carat Weight **1.72 CARAT**

Color Grade **D**

Clarity Grade **VVS 2**

ADDITIONAL GRADING INFORMATION

Polish **EXCELLENT**

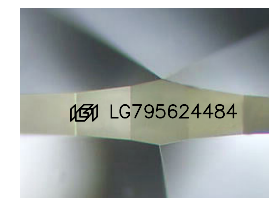
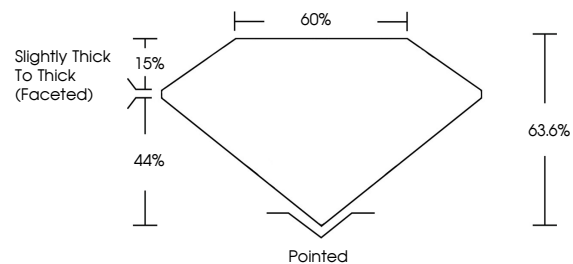
Symmetry **EXCELLENT**

Fluorescence **NONE**

Inscription(s) **IGI LG795624484**

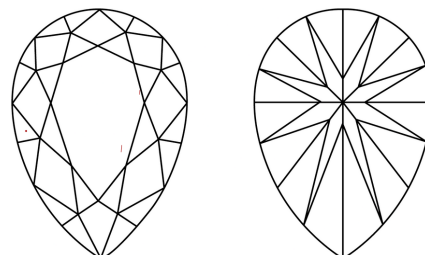
Comments: This Laboratory Grown Diamond was created by Chemical Vapor Deposition (CVD) growth process.
Type IIa

PROPORTIONS



Sample Image Used

CLARITY CHARACTERISTICS



KEY TO SYMBOLS

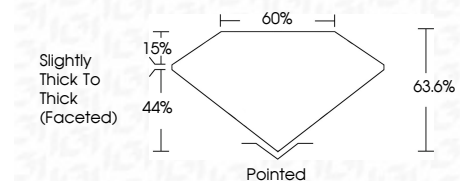
Red symbols indicate internal characteristics.
Green symbols indicate external characteristics.

COLOR

D E F G H I J Faint Very Light Light

CLARITY

FL	IF	VVS ¹⁻²	VS ¹⁻²	SI ¹⁻²	I ¹⁻³
Flawless	Internally Flawless	Very Very Slightly Included	Very Slightly Included	Slightly Included	Included



ADDITIONAL GRADING INFORMATION

Polish **EXCELLENT**

Symmetry **EXCELLENT**

Fluorescence **NONE**

Inscription(s) **IGI LG795624484**

Comments: This Laboratory Grown Diamond was created by Chemical Vapor Deposition (CVD) growth process.
Type IIa



IGI



May 18, 2026
IGI Report No LG795624484
PEAR BRILLIANT
11.00 X 6.48 X 4.12 MM
Carat Weight 1.72 CARAT
Color Grade D
Clarity Grade VVS 2
Depth 63.6%
Table 60%
Girdle Slightly Thick To Thick (Faceted)
Culet Pointed
Polish EXCELLENT
Symmetry EXCELLENT
Fluorescence NONE
Inscription(s) IGI LG795624484
Comments: This Laboratory Grown Diamond was created by Chemical Vapor Deposition (CVD) growth process.
Type IIa