



May 15, 2026

IGI Report Number **LG795624196**

PEAR MODIFIED BRILLIANT

LABORATORY GROWN DIAMOND

6.26 X 4.16 X 2.66 MM

Carat Weight **0.52 CARAT**

Color Grade **FANCY VIVID PINK**

Clarity Grade **VS 2**

Polish **VERY GOOD**

Symmetry **VERY GOOD**

Fluorescence **STRONG**

Inscription(s) **IGI LG795624196**

Comments: This Laboratory Grown Diamond was created by Chemical Vapor Deposition (CVD) growth process. Indications of post-growth treatment.

LABORATORY GROWN DIAMOND REPORT

May 15, 2026

IGI Report Number

LG795624196

Description

LABORATORY GROWN DIAMOND

Shape and Cutting Style

PEAR MODIFIED BRILLIANT

Measurements

6.26 X 4.16 X 2.66 MM

GRADING RESULTS

Carat Weight

0.52 CARAT

Color Grade

FANCY VIVID PINK

Clarity Grade

VS 2

ADDITIONAL GRADING INFORMATION

Polish

VERY GOOD

Symmetry

VERY GOOD

Fluorescence

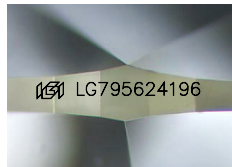
STRONG

Inscription(s)

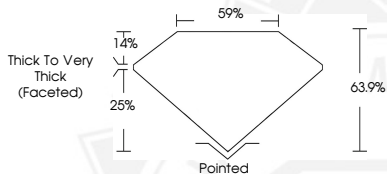
IGI LG795624196

Comments: This Laboratory Grown Diamond was created by Chemical Vapor Deposition (CVD) growth process.

Indications of post-growth treatment.



Sample Image Used



May 15, 2026

IGI Report Number **LG795624196**

PEAR MODIFIED BRILLIANT

LABORATORY GROWN DIAMOND

6.26 X 4.16 X 2.66 MM

Carat Weight **0.52 CARAT**

Color Grade **FANCY VIVID PINK**

Clarity Grade **VS 2**

Polish **VERY GOOD**

Symmetry **VERY GOOD**

Fluorescence **STRONG**

Inscription(s) **IGI LG795624196**

Comments: This Laboratory Grown Diamond was created by Chemical Vapor Deposition (CVD) growth process. Indications of post-growth treatment.



THIS DOCUMENT WAS PRODUCED WITH THE FOLLOWING SECURITY MEASURES: SPECIAL DOCUMENT PAPER, INK SCREENS, WATERMARK, BACKGROUND DESIGNS, HOLOGRAM AND OTHER SECURITY FEATURES NOT LISTED AND DO EXCEED DOCUMENT SECURITY INDUSTRY GUIDELINES.