



**ELECTRONIC COPY**

LG795624048  
Report verification at igi.org



May 26, 2026  
IGI Report Number **LG795624048**  
Description **LABORATORY GROWN DIAMOND**  
Shape and Cutting Style **CUSHION MODIFIED BRILLIANT**  
Measurements **10.49 X 9.11 X 6.42 MM**  
**GRADING RESULTS**  
Carat Weight **5.60 CARATS**  
Color Grade **FANCY VIVID YELLOW**  
Clarity Grade **VS 1**

May 26, 2026  
IGI Report Number **LG795624048**  
Description **LABORATORY GROWN DIAMOND**  
Shape and Cutting Style **CUSHION MODIFIED BRILLIANT**  
Measurements **10.49 X 9.11 X 6.42 MM**

**GRADING RESULTS**

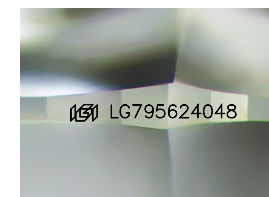
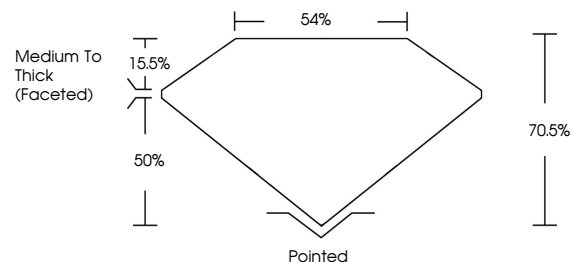
Carat Weight **5.60 CARATS**  
Color Grade **FANCY VIVID YELLOW**  
Clarity Grade **VS 1**

**ADDITIONAL GRADING INFORMATION**

Polish **EXCELLENT**  
Symmetry **EXCELLENT**  
Fluorescence **NONE**  
Inscription(s) **IGI LG795624048**

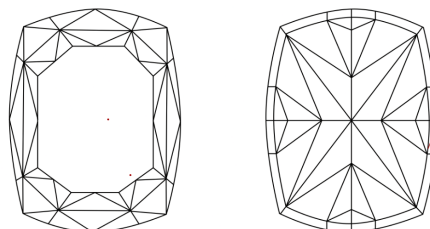
Comments: This Laboratory Grown Diamond was created by Chemical Vapor Deposition (CVD) growth process.

**PROPORTIONS**



Sample Image Used

**CLARITY CHARACTERISTICS**



**KEY TO SYMBOLS**

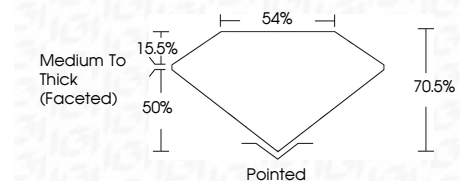
Red symbols indicate internal characteristics.  
Green symbols indicate external characteristics.

**COLOR**

D E F G H I J Faint Very Light Light

**CLARITY**

FL	IF	VS <sup>1-2</sup>	VS <sup>1-2</sup>	SI <sup>1-2</sup>	I <sup>1-3</sup>
Flawless	Internally Flawless	Very Very Slightly Included	Very Slightly Included	Slightly Included	Included



**ADDITIONAL GRADING INFORMATION**

Polish **EXCELLENT**  
Symmetry **EXCELLENT**  
Fluorescence **NONE**  
Inscription(s) **IGI LG795624048**  
Comments: This Laboratory Grown Diamond was created by Chemical Vapor Deposition (CVD) growth process.



May 26, 2026  
IGI Report No LG795624048  
CUSHION MODIFIED BRILLIANT  
5.60 CARATS  
Carat Weight  
Color Grade FANCY VIVID YELLOW  
Clarity Grade VS 1  
Depth 10.49 X 9.11 X 6.42 MM  
Table 70.5%  
Girdle 54%  
Medium To Thick (Faceted)  
Culet Pointed  
Polish EXCELLENT  
Symmetry EXCELLENT  
Fluorescence NONE  
Inscription(s) IGI LG795624048  
Comments: This Laboratory Grown Diamond was created by Chemical Vapor Deposition (CVD) growth process.