



**ELECTRONIC COPY**

LG795623819  
Report verification at igi.org



May 26, 2026

IGI Report Number **LG795623819**

Description **LABORATORY GROWN DIAMOND**

Shape and Cutting Style **CUT CORNERED  
RECTANGULAR MODIFIED  
BRILLIANT**

Measurements **11.42 X 7.57 X 5.03 MM**

**GRADING RESULTS**

Carat Weight **4.01 CARATS**

Color Grade **FANCY VIVID YELLOW**

Clarity Grade **VS 2**

**LABORATORY GROWN DIAMOND REPORT**

May 26, 2026

IGI Report Number **LG795623819**

Description **LABORATORY GROWN DIAMOND**

Shape and Cutting Style **CUT CORNERED RECTANGULAR  
MODIFIED BRILLIANT**

Measurements **11.42 X 7.57 X 5.03 MM**

**GRADING RESULTS**

Carat Weight **4.01 CARATS**

Color Grade **FANCY VIVID YELLOW**

Clarity Grade **VS 2**

**ADDITIONAL GRADING INFORMATION**

Polish **EXCELLENT**

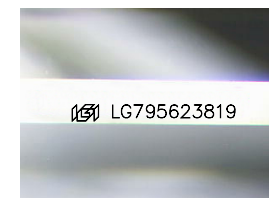
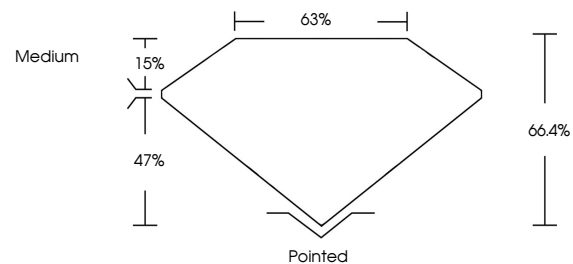
Symmetry **VERY GOOD**

Fluorescence **NONE**

Inscription(s) **IGI LG795623819**

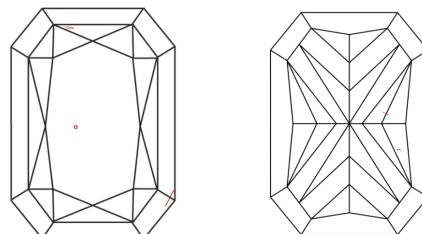
Comments: This Laboratory Grown Diamond was created by Chemical Vapor Deposition (CVD) growth process.

**PROPORTIONS**



Sample Image Used

**CLARITY CHARACTERISTICS**



**KEY TO SYMBOLS**

Red symbols indicate internal characteristics.  
Green symbols indicate external characteristics.

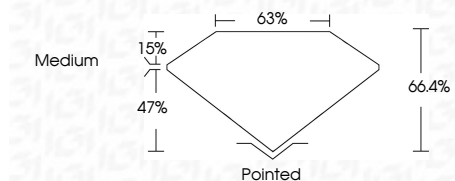
**COLOR**

D E F G H I J Faint Very Light Light

**CLARITY**

FL IF VS<sup>1-2</sup> VS<sup>1-2</sup> SI<sup>1-2</sup> I<sup>1-3</sup>

Flawless Internally Flawless Very Very Slightly Included Very Slightly Included Slightly Included Included



**ADDITIONAL GRADING INFORMATION**

Polish **EXCELLENT**

Symmetry **VERY GOOD**

Fluorescence **NONE**

Inscription(s) **IGI LG795623819**

Comments: This Laboratory Grown Diamond was created by Chemical Vapor Deposition (CVD) growth process.



**IGI**



May 26, 2026  
IGI Report No LG795623819  
CUT CORNERED RECT. MODIFIED BRILLIANT  
4.01 CARATS  
Carat Weight  
Color Grade FANCY VIVID YELLOW  
Clarity Grade VS 2  
Depth 66.4%  
Table 63%  
Girdle Medium  
Culet Pointed  
Polish EXCELLENT  
Symmetry VERY GOOD  
Fluorescence NONE  
Inscription(s) IGI LG795623819  
Comments: This Laboratory Grown Diamond was created by Chemical Vapor Deposition (CVD) growth process.