



ELECTRONIC COPY

LG795623804
Report verification at igi.org



June 2, 2026
IGI Report Number **LG795623804**
Description **LABORATORY GROWN DIAMOND**
Shape and Cutting Style **SQUARE CUSHION MODIFIED BRILLIANT**
Measurements **11.32 X 10.95 X 6.86 MM**
GRADING RESULTS
Carat Weight **8.05 CARATS**
Color Grade **FANCY VIVID RED**
Clarity Grade **VS 1**

LABORATORY GROWN DIAMOND REPORT

June 2, 2026
IGI Report Number **LG795623804**
Description **LABORATORY GROWN DIAMOND**
Shape and Cutting Style **SQUARE CUSHION MODIFIED BRILLIANT**
Measurements **11.32 X 10.95 X 6.86 MM**

GRADING RESULTS

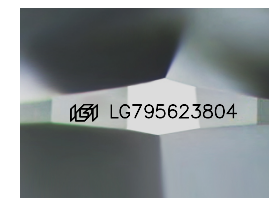
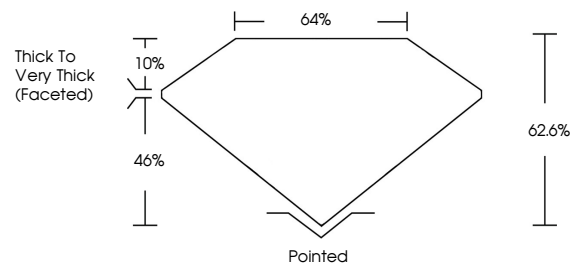
Carat Weight **8.05 CARATS**
Color Grade **FANCY VIVID RED**
Clarity Grade **VS 1**

ADDITIONAL GRADING INFORMATION

Polish **EXCELLENT**
Symmetry **EXCELLENT**
Fluorescence **SLIGHT**
Inscription(s) **IGI LG795623804**

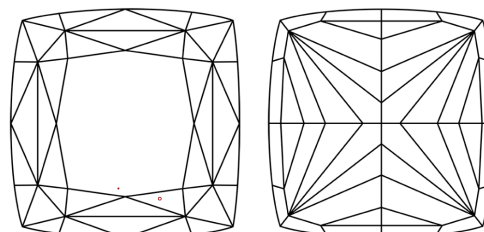
Comments: This Laboratory Grown Diamond was created by Chemical Vapor Deposition (CVD) growth process.
Indications of post-growth treatment.

PROPORTIONS



Sample Image Used

CLARITY CHARACTERISTICS



KEY TO SYMBOLS

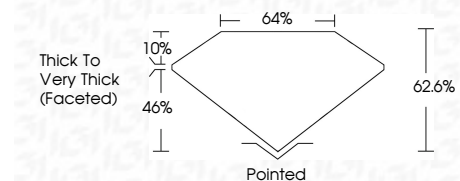
Red symbols indicate internal characteristics.
Green symbols indicate external characteristics.

COLOR

D E F G H I J Faint Very Light Light

CLARITY

FL	IF	VS ¹⁻²	VS ¹⁻²	SI ¹⁻²	I ¹⁻³
Flawless	Internally Flawless	Very Very Slightly Included	Very Slightly Included	Slightly Included	Included



ADDITIONAL GRADING INFORMATION

Polish **EXCELLENT**
Symmetry **EXCELLENT**
Fluorescence **SLIGHT**
Inscription(s) **IGI LG795623804**
Comments: This Laboratory Grown Diamond was created by Chemical Vapor Deposition (CVD) growth process.
Indications of post-growth treatment.



June 2, 2026
IGI Report No. **LG795623804**
SQUARE CUSHION MODIFIED BRILLIANT
8.05 CARATS
Carat Weight
Color Grade **FANCY VIVID RED**
Clarity Grade **VS 1**
Depth **62.6%**
Table **64%**
Girdle **Thick to Very Thick (Faceted)**
Culet **Pointed**
Polish **EXCELLENT**
Symmetry **EXCELLENT**
Fluorescence **SLIGHT**
Inscription(s) **IGI LG795623804**
Comments: This Laboratory Grown Diamond was created by Chemical Vapor Deposition (CVD) growth process.
Indications of post-growth treatment.