



ELECTRONIC COPY

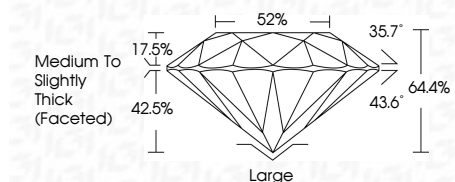
LG795623647
Report verification at igi.org



May 21, 2026
IGI Report Number **LG795623647**
Description **LABORATORY GROWN DIAMOND**
Shape and Cutting Style **OLD EUROPEAN CUT**
Measurements **7.73 - 7.77 X 4.99 MM**

GRADING RESULTS

Carat Weight **2.01 CARATS**
Color Grade **E**
Clarity Grade **VS 1**

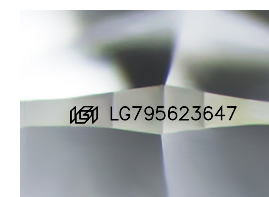


ADDITIONAL GRADING INFORMATION

Polish **EXCELLENT**
Symmetry **EXCELLENT**
Fluorescence **NONE**
Inscription(s) **IGI LG795623647**
Comments: This Laboratory Grown Diamond was created by Chemical Vapor Deposition (CVD) growth process. Type IIa

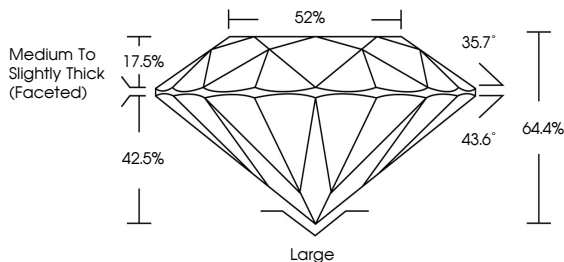


May 21, 2026
IGI Report No. LG795623647
OLD EUROPEAN CUT
2.01 CARATS
E
Carat Weight
Color Grade
Clarity Grade
Depth 64.4%
Table 52%
Girdle
Medium to Slightly Thick (Faceted)
Large
Culet
Polish
Symmetry
Fluorescence
Inscription(s)
EXCELLENT
EXCELLENT
NONE
IGI LG795623647
Comments: This Laboratory Grown Diamond was created by Chemical Vapor Deposition (CVD) growth process. Type IIa

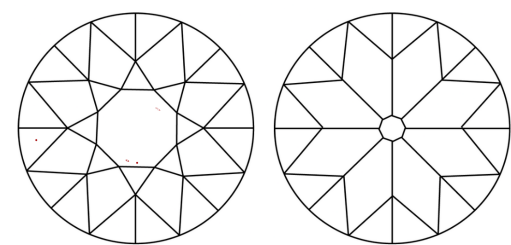


Sample Image Used

PROPORTIONS



CLARITY CHARACTERISTICS



KEY TO SYMBOLS

Red symbols indicate internal characteristics.
Green symbols indicate external characteristics.

COLOR

D	E	F	G	H	I	J	Faint	Very Light	Light
---	---	---	---	---	---	---	-------	------------	-------

CLARITY

FL	IF	VS ¹⁻²	VS ¹⁻²	SI ¹⁻²	I ¹⁻³
Flawless	Internally Flawless	Very Very Slightly Included	Very Slightly Included	Slightly Included	Included

