



**ELECTRONIC COPY**

LG795623422  
Report verification at igi.org



May 19, 2026

IGI Report Number **LG795623422**

Description **LABORATORY GROWN DIAMOND**

Shape and Cutting Style **EMERALD CUT**

Measurements **8.55 X 6.30 X 4.22 MM**

**GRADING RESULTS**

Carat Weight **2.33 CARATS**

Color Grade **FANCY VIVID GREENISH BLUE**

Clarity Grade **SI 1**

**LABORATORY GROWN DIAMOND REPORT**

May 19, 2026

IGI Report Number **LG795623422**

Description **LABORATORY GROWN DIAMOND**

Shape and Cutting Style **EMERALD CUT**

Measurements **8.55 X 6.30 X 4.22 MM**

**GRADING RESULTS**

Carat Weight **2.33 CARATS**

Color Grade **FANCY VIVID GREENISH BLUE**

Clarity Grade **SI 1**

**ADDITIONAL GRADING INFORMATION**

Polish **EXCELLENT**

Symmetry **VERY GOOD**

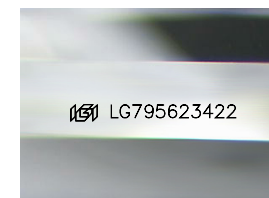
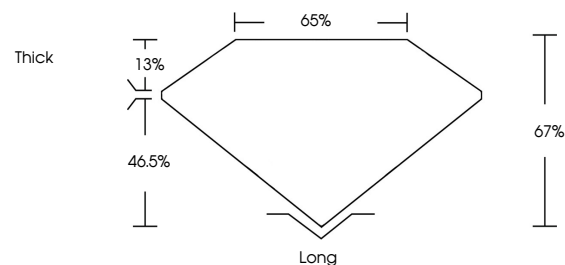
Fluorescence **NONE**

Inscription(s) **IGI LG795623422**

Comments: This Laboratory Grown Diamond was created by Chemical Vapor Deposition (CVD) growth process.

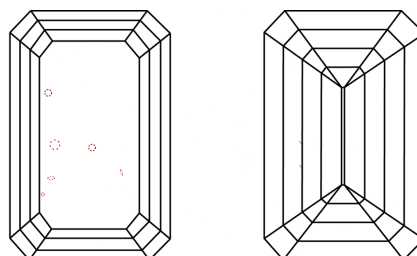
Indications of post-growth treatment.

**PROPORTIONS**



Sample Image Used

**CLARITY CHARACTERISTICS**



**KEY TO SYMBOLS**

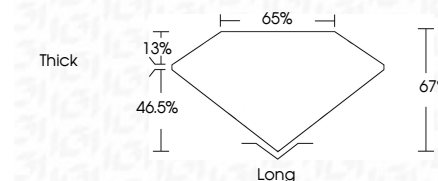
Red symbols indicate internal characteristics.  
Green symbols indicate external characteristics.

**COLOR**

D E F G H I J Faint Very Light Light

**CLARITY**

FL	IF	VS <sup>1-2</sup>	VS <sup>1-2</sup>	SI <sup>1-2</sup>	I <sup>1-3</sup>
Flawless	Internally Flawless	Very Very Slightly Included	Very Slightly Included	Slightly Included	Included



**ADDITIONAL GRADING INFORMATION**

Polish **EXCELLENT**

Symmetry **VERY GOOD**

Fluorescence **NONE**

Inscription(s) **IGI LG795623422**

Comments: This Laboratory Grown Diamond was created by Chemical Vapor Deposition (CVD) growth process. Indications of post-growth treatment.



May 19, 2026  
IGI Report No LG795623422  
EMERALD CUT  
2.33 CARATS  
Carat Weight  
Color Grade FANCY VIVID GREENISH BLUE  
Clarity Grade SI 1  
Depth 67%  
Table 65%  
Girdle Thick  
Culet Long  
Polish EXCELLENT  
Symmetry VERY GOOD  
Fluorescence NONE  
Inscription(s) IGI LG795623422  
Comments: This Laboratory Grown Diamond was created by Chemical Vapor Deposition (CVD) growth process. Indications of post-growth treatment.