



ELECTRONIC COPY

LG795623420
Report verification at igi.org



May 19, 2026

IGI Report Number **LG795623420**

Description **LABORATORY GROWN DIAMOND**

Shape and Cutting Style **EMERALD CUT**

Measurements **7.82 X 5.54 X 3.74 MM**

GRADING RESULTS

Carat Weight **1.55 CARAT**

Color Grade **FANCY VIVID GREEN BLUE**

Clarity Grade **VS 1**

May 19, 2026
IGI Report Number **LG795623420**
Description **LABORATORY GROWN DIAMOND**
Shape and Cutting Style **EMERALD CUT**
Measurements **7.82 X 5.54 X 3.74 MM**

GRADING RESULTS

Carat Weight **1.55 CARAT**

Color Grade **FANCY VIVID GREEN BLUE**

Clarity Grade **VS 1**

ADDITIONAL GRADING INFORMATION

Polish **VERY GOOD**

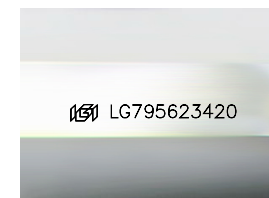
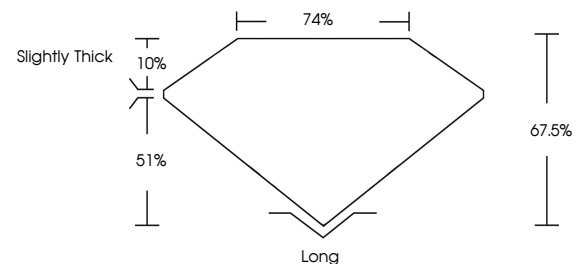
Symmetry **VERY GOOD**

Fluorescence **NONE**

Inscription(s) **IGI LG795623420**

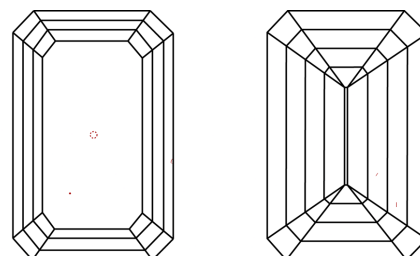
Comments: This Laboratory Grown Diamond was created by Chemical Vapor Deposition (CVD) growth process.
Indications of post-growth treatment.

PROPORTIONS



Sample Image Used

CLARITY CHARACTERISTICS



KEY TO SYMBOLS

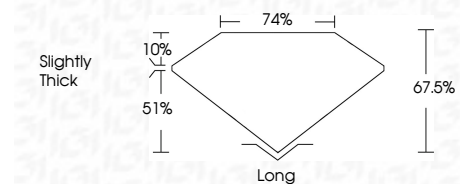
Red symbols indicate internal characteristics.
Green symbols indicate external characteristics.

COLOR

D E F G H I J Faint Very Light Light

CLARITY

FL	IF	VS ¹⁻²	VS ¹⁻²	SI ¹⁻²	I ¹⁻³
Flawless	Internally Flawless	Very Very Slightly Included	Very Slightly Included	Slightly Included	Included



ADDITIONAL GRADING INFORMATION

Polish **VERY GOOD**

Symmetry **VERY GOOD**

Fluorescence **NONE**

Inscription(s) **IGI LG795623420**

Comments: This Laboratory Grown Diamond was created by Chemical Vapor Deposition (CVD) growth process.
Indications of post-growth treatment.



IGI



May 19, 2026
IGI Report No **LG795623420**
EMERALD CUT
Carat Weight **1.55 CARAT**
Color Grade **FANCY VIVID GREEN BLUE**
Clarity Grade **VS 1**
Depth **51%**
Table **74%**
Girdle **Slightly Thick**
Culet **Long**
Polish **VERY GOOD**
Symmetry **VERY GOOD**
Fluorescence **NONE**
Inscription(s) **IGI LG795623420**
Comments: This Laboratory Grown Diamond was created by Chemical Vapor Deposition (CVD) growth process.
Indications of post-growth treatment.