



ELECTRONIC COPY

LG795623419
Report verification at igi.org



May 19, 2026

IGI Report Number **LG795623419**

Description **LABORATORY GROWN DIAMOND**

Shape and Cutting Style **EMERALD CUT**

Measurements **7.03 X 5.17 X 3.08 MM**

GRADING RESULTS

Carat Weight **1.16 CARAT**

Color Grade **FANCY VIVID BLUE GREEN**

Clarity Grade **VS 2**

May 19, 2026
IGI Report Number **LG795623419**
Description **LABORATORY GROWN DIAMOND**
Shape and Cutting Style **EMERALD CUT**
Measurements **7.03 X 5.17 X 3.08 MM**

GRADING RESULTS

Carat Weight **1.16 CARAT**

Color Grade **FANCY VIVID BLUE GREEN**

Clarity Grade **VS 2**

ADDITIONAL GRADING INFORMATION

Polish **VERY GOOD**

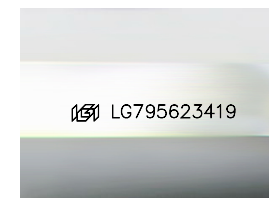
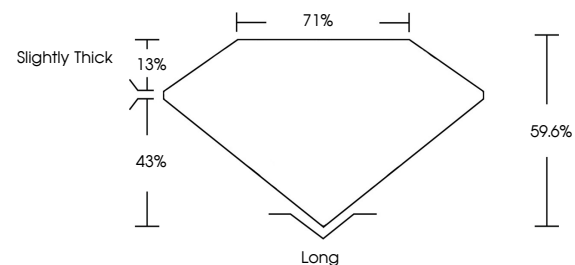
Symmetry **VERY GOOD**

Fluorescence **NONE**

Inscription(s) **IGI LG795623419**

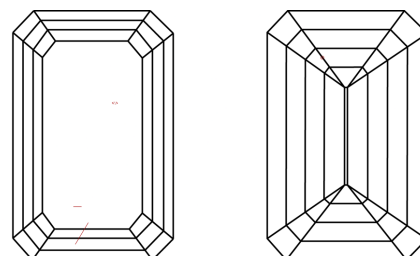
Comments: This Laboratory Grown Diamond was created by Chemical Vapor Deposition (CVD) growth process.
Indications of post-growth treatment.

PROPORTIONS



Sample Image Used

CLARITY CHARACTERISTICS



KEY TO SYMBOLS

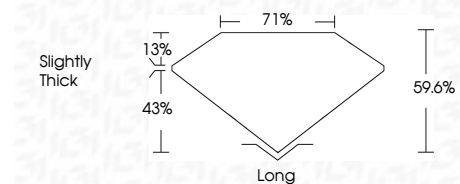
Red symbols indicate internal characteristics.
Green symbols indicate external characteristics.

COLOR

D E F G H I J Faint Very Light Light

CLARITY

FL	IF	VS ¹⁻²	VS ¹⁻²	SI ¹⁻²	I ¹⁻³
Flawless	Internally Flawless	Very Very Slightly Included	Very Slightly Included	Slightly Included	Included



ADDITIONAL GRADING INFORMATION

Polish **VERY GOOD**

Symmetry **VERY GOOD**

Fluorescence **NONE**

Inscription(s) **IGI LG795623419**

Comments: This Laboratory Grown Diamond was created by Chemical Vapor Deposition (CVD) growth process.
Indications of post-growth treatment.



IGI



May 19, 2026
IGI Report No LG795623419
EMERALD CUT
1.16 CARAT
7.03 X 5.17 X 3.08 MM
Color Grade **FANCY VIVID BLUE GREEN**
Clarity Grade **VS 2**
Depth **59.6%**
Table **71%**
Girdle **Slightly Thick**
Culet **Long**
Polish **VERY GOOD**
Symmetry **VERY GOOD**
Fluorescence **NONE**
Inscription(s) **IGI LG795623419**
Comments: This Laboratory Grown Diamond was created by Chemical Vapor Deposition (CVD) growth process.
Indications of post-growth treatment.