



ELECTRONIC COPY

LG795623351
Report verification at igi.org



May 19, 2026
IGI Report Number **LG795623351**
Description **LABORATORY GROWN DIAMOND**
Shape and Cutting Style **CUSHION MODIFIED BRILLIANT**
Measurements **8.82 X 6.80 X 4.61 MM**
GRADING RESULTS
Carat Weight **2.56 CARATS**
Color Grade **FANCY VIVID YELLOW**
Clarity Grade **VVS 2**

LABORATORY GROWN DIAMOND REPORT

May 19, 2026
IGI Report Number **LG795623351**
Description **LABORATORY GROWN DIAMOND**
Shape and Cutting Style **CUSHION MODIFIED BRILLIANT**
Measurements **8.82 X 6.80 X 4.61 MM**

GRADING RESULTS

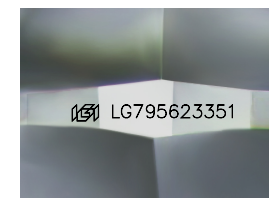
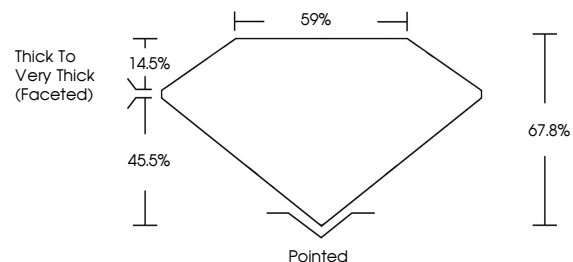
Carat Weight **2.56 CARATS**
Color Grade **FANCY VIVID YELLOW**
Clarity Grade **VVS 2**

ADDITIONAL GRADING INFORMATION

Polish **EXCELLENT**
Symmetry **EXCELLENT**
Fluorescence **NONE**
Inscription(s) **IGI LG795623351**

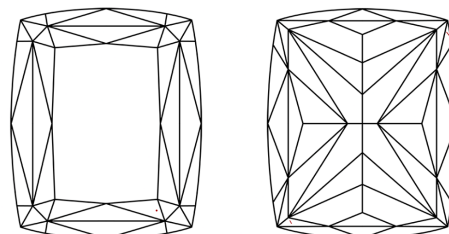
Comments: This Laboratory Grown Diamond was created by Chemical Vapor Deposition (CVD) growth process.

PROPORTIONS



Sample Image Used

CLARITY CHARACTERISTICS



KEY TO SYMBOLS

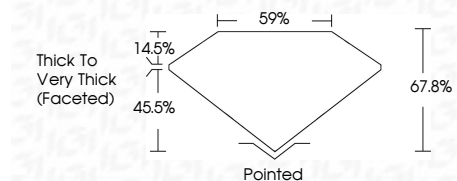
Red symbols indicate internal characteristics.
Green symbols indicate external characteristics.

COLOR

D E F G H I J Faint Very Light Light

CLARITY

FL	IF	VVS ¹⁻²	VS ¹⁻²	SI ¹⁻²	I ¹⁻³
Flawless	Internally Flawless	Very Very Slightly Included	Very Slightly Included	Slightly Included	Included



ADDITIONAL GRADING INFORMATION

Polish **EXCELLENT**
Symmetry **EXCELLENT**
Fluorescence **NONE**
Inscription(s) **IGI LG795623351**
Comments: This Laboratory Grown Diamond was created by Chemical Vapor Deposition (CVD) growth process.



May 19, 2026
IGI Report No LG795623351
CUSHION MODIFIED BRILLIANT
8.82 X 6.80 X 4.61 MM
2.56 CARATS
FANCY VIVID YELLOW
VVS 2
67.8%
59%
Thick to Very Thick (Faceted)
Pointed
EXCELLENT
EXCELLENT
NONE
IGI LG795623351
Comments: This Laboratory Grown Diamond was created by Chemical Vapor Deposition (CVD) growth process.