



ELECTRONIC COPY

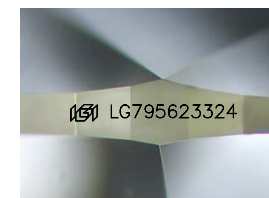
LG795623324
Report verification at igi.org



May 19, 2026
IGI Report Number **LG795623324**
Description **LABORATORY GROWN DIAMOND**
Shape and Cutting Style **PEAR MODIFIED BRILLIANT**
Measurements **21.31 X 12.56 X 7.37 MM**

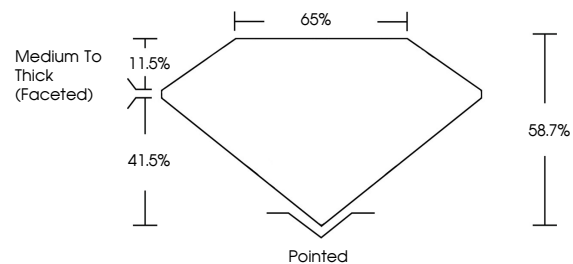
GRADING RESULTS

Carat Weight **15.02 CARATS**
Color Grade **FANCY VIVID PINK**
Clarity Grade **VS 1**

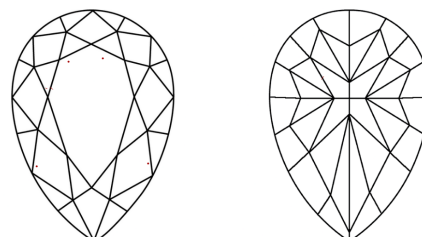


Sample Image Used

PROPORTIONS



CLARITY CHARACTERISTICS



KEY TO SYMBOLS

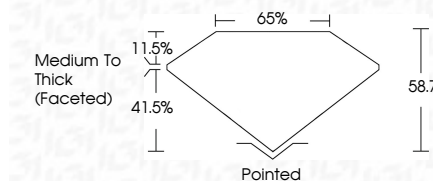
Red symbols indicate internal characteristics.
Green symbols indicate external characteristics.

COLOR

D E F G H I J Faint Very Light Light

CLARITY

FL	IF	VS ¹⁻²	VS ¹⁻²	SI ¹⁻²	I ¹⁻³
Flawless	Internally Flawless	Very Very Slightly Included	Very Slightly Included	Slightly Included	Included



ADDITIONAL GRADING INFORMATION

Polish **EXCELLENT**
Symmetry **EXCELLENT**
Fluorescence **STRONG**
Inscription(s) **(IGI) LG795623324**
Comments: This Laboratory Grown Diamond was created by Chemical Vapor Deposition (CVD) growth process. Indications of post-growth treatment.



IGI



May 19, 2026
IGI Report No LG795623324
PEAR MODIFIED BRILLIANT
21.31 X 12.56 X 7.37 MM
Carat Weight **15.02 CARATS**
Color Grade **FANCY VIVID PINK**
Clarity Grade **VS 1**
Table **65%**
Girdle **Medium To Thick (Faceted)**
Culet **Pointed**
Polish **EXCELLENT**
Symmetry **EXCELLENT**
Fluorescence **STRONG**
Inscription(s) **(IGI) LG795623324**
Comments: This Laboratory Grown Diamond was created by Chemical Vapor Deposition (CVD) growth process. Indications of post-growth treatment.