



ELECTRONIC COPY

LG795623304
Report verification at igi.org



May 18, 2026
IGI Report Number **LG795623304**
Description **LABORATORY GROWN DIAMOND**
Shape and Cutting Style **CUSHION MODIFIED BRILLIANT**
Measurements **10.00 X 7.06 X 4.70 MM**
GRADING RESULTS
Carat Weight **3.02 CARATS**
Color Grade **FANCY VIVID YELLOW**
Clarity Grade **VS 2**

May 18, 2026
IGI Report Number **LG795623304**
Description **LABORATORY GROWN DIAMOND**
Shape and Cutting Style **CUSHION MODIFIED BRILLIANT**
Measurements **10.00 X 7.06 X 4.70 MM**

GRADING RESULTS

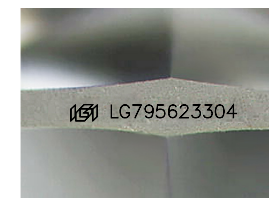
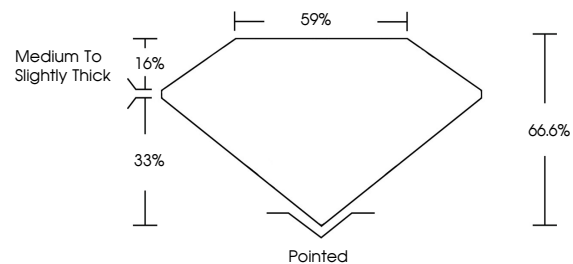
Carat Weight **3.02 CARATS**
Color Grade **FANCY VIVID YELLOW**
Clarity Grade **VS 2**

ADDITIONAL GRADING INFORMATION

Polish **EXCELLENT**
Symmetry **EXCELLENT**
Fluorescence **NONE**
Inscription(s) **IGI LG795623304**

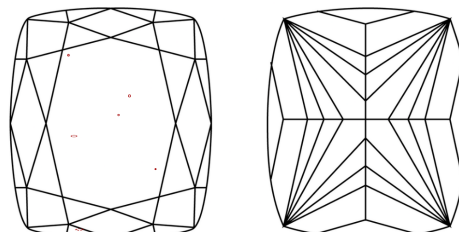
Comments: This Laboratory Grown Diamond was created by Chemical Vapor Deposition (CVD) growth process.

PROPORTIONS



Sample Image Used

CLARITY CHARACTERISTICS



KEY TO SYMBOLS

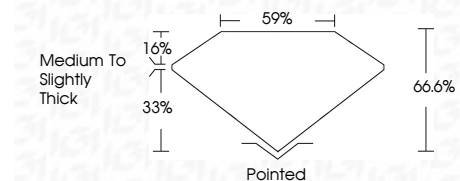
Red symbols indicate internal characteristics.
Green symbols indicate external characteristics.

COLOR

D E F G H I J Faint Very Light Light

CLARITY

| FL | IF | VS ¹⁻² | VS ¹⁻² | SI ¹⁻² | I ¹⁻³ |
|----------|---------------------|-----------------------------|------------------------|-------------------|------------------|
| Flawless | Internally Flawless | Very Very Slightly Included | Very Slightly Included | Slightly Included | Included |



ADDITIONAL GRADING INFORMATION

Polish **EXCELLENT**
Symmetry **EXCELLENT**
Fluorescence **NONE**
Inscription(s) **IGI LG795623304**
Comments: This Laboratory Grown Diamond was created by Chemical Vapor Deposition (CVD) growth process.



May 18, 2026
IGI Report No LG795623304
CUSHION MODIFIED BRILLIANT
3.02 CARATS
Carat Weight
Color Grade FANCY VIVID YELLOW
Clarity Grade VS 2
Table 59%
Depth 33%
Girdle 66.6%
Medium to Slightly Thick
Pointed
Culet
Polish EXCELLENT
Symmetry EXCELLENT
Fluorescence NONE
Inscription(s) IGI LG795623304
Comments: This Laboratory Grown Diamond was created by Chemical Vapor Deposition (CVD) growth process.