



ELECTRONIC COPY

LG795623192
Report verification at igi.org



May 18, 2026

IGI Report Number **LG795623192**

Description **LABORATORY GROWN DIAMOND**

Shape and Cutting Style **ROUND BRILLIANT**

Measurements **8.12 - 8.14 X 4.91 MM**

GRADING RESULTS

Carat Weight **2.02 CARATS**

Color Grade **FANCY INTENSE PINK**

Clarity Grade **VVS 2**

Cut Grade **IDEAL**

May 18, 2026
IGI Report Number **LG795623192**
Description **LABORATORY GROWN DIAMOND**
Shape and Cutting Style **ROUND BRILLIANT**
Measurements **8.12 - 8.14 X 4.91 MM**

GRADING RESULTS

Carat Weight **2.02 CARATS**

Color Grade **FANCY INTENSE PINK**

Clarity Grade **VVS 2**

Cut Grade **IDEAL**

ADDITIONAL GRADING INFORMATION

Polish **EXCELLENT**

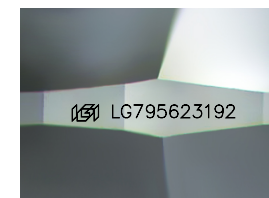
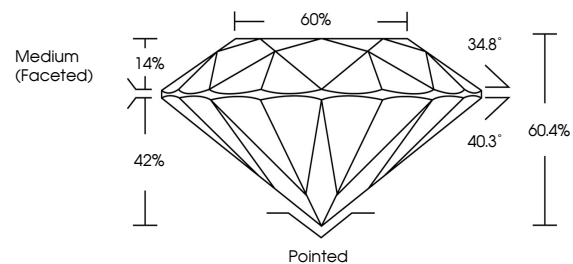
Symmetry **EXCELLENT**

Fluorescence **SLIGHT**

Inscription(s) **LG795623192**

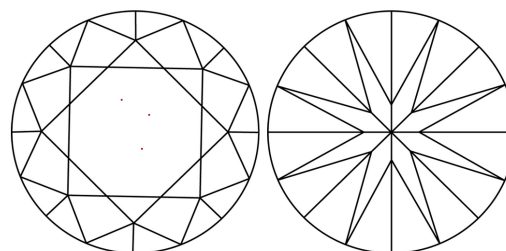
Comments: This Laboratory Grown Diamond was created by Chemical Vapor Deposition (CVD) growth process.
Indications of post-growth treatment.

PROPORTIONS



Sample Image Used

CLARITY CHARACTERISTICS



KEY TO SYMBOLS

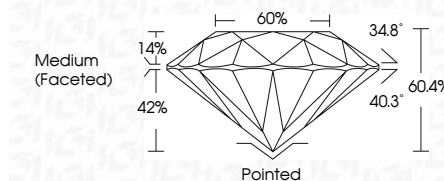
Red symbols indicate internal characteristics.
Green symbols indicate external characteristics.

COLOR

D E F G H I J Faint Very Light Light

CLARITY

FL	IF	VVS ¹⁻²	VS ¹⁻²	SI ¹⁻²	I ¹⁻³
Flawless	Internally Flawless	Very Very Slightly Included	Very Slightly Included	Slightly Included	Included



ADDITIONAL GRADING INFORMATION

Polish **EXCELLENT**

Symmetry **EXCELLENT**

Fluorescence **SLIGHT**

Inscription(s) **LG795623192**

Comments: This Laboratory Grown Diamond was created by Chemical Vapor Deposition (CVD) growth process.
Indications of post-growth treatment.



May 18, 2026	IGI Report No LG795623192	ROUND BRILLIANT	8.12 - 8.14 X 4.91 MM	2.02 CARATS	FANCY INTENSE PINK	VVS 2	IDEAL	60.4%	Medium (Faceted)	Pointed	EXCELLENT	EXCELLENT	SLIGHT	LG795623192
<p>Comments: This Laboratory Grown Diamond was created by Chemical Vapor Deposition (CVD) growth process. Indications of post-growth treatment.</p>														