



ELECTRONIC COPY

LG795623184
Report verification at igi.org



May 18, 2026
IGI Report Number **LG795623184**
Description **LABORATORY GROWN DIAMOND**
Shape and Cutting Style **ROUND BRILLIANT**
Measurements **8.19 - 8.25 X 4.98 MM**
GRADING RESULTS
Carat Weight **2.06 CARATS**
Color Grade **FANCY INTENSE PINK**
Clarity Grade **VS 2**
Cut Grade **IDEAL**

May 18, 2026
IGI Report Number **LG795623184**
Description **LABORATORY GROWN DIAMOND**
Shape and Cutting Style **ROUND BRILLIANT**
Measurements **8.19 - 8.25 X 4.98 MM**

GRADING RESULTS

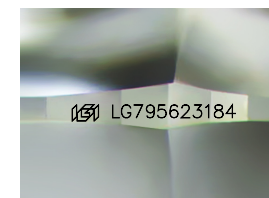
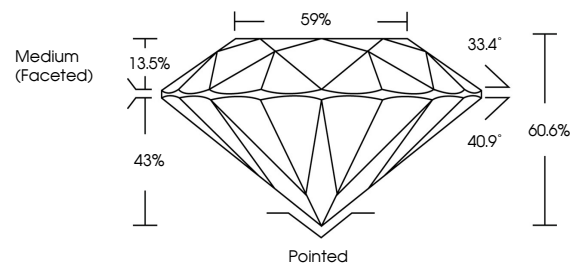
Carat Weight **2.06 CARATS**
Color Grade **FANCY INTENSE PINK**
Clarity Grade **VS 2**
Cut Grade **IDEAL**

ADDITIONAL GRADING INFORMATION

Polish **EXCELLENT**
Symmetry **EXCELLENT**
Fluorescence **SLIGHT**
Inscription(s) **LG795623184**

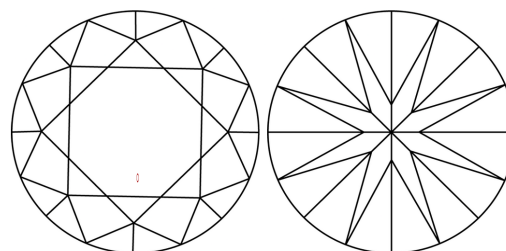
Comments: This Laboratory Grown Diamond was created by Chemical Vapor Deposition (CVD) growth process.
Indications of post-growth treatment.

PROPORTIONS



Sample Image Used

CLARITY CHARACTERISTICS



KEY TO SYMBOLS

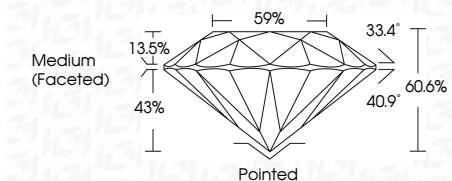
Red symbols indicate internal characteristics.
Green symbols indicate external characteristics.

COLOR

D E F G H I J Faint Very Light Light

CLARITY

FL	IF	VS ¹⁻²	VS ¹⁻²	SI ¹⁻²	I ¹⁻³
Flawless	Internally Flawless	Very Very Slightly Included	Very Slightly Included	Slightly Included	Included



ADDITIONAL GRADING INFORMATION

Polish **EXCELLENT**
Symmetry **EXCELLENT**
Fluorescence **SLIGHT**
Inscription(s) **LG795623184**
Comments: This Laboratory Grown Diamond was created by Chemical Vapor Deposition (CVD) growth process.
Indications of post-growth treatment.



May 18, 2026
IGI Report No LG795623184
ROUND BRILLIANT
8.19 - 8.25 X 4.98 MM
2.06 CARATS
FANCY INTENSE PINK
VS 2
IDEAL
60.6%
59%
Medium (Faceted)

Pointed
EXCELLENT
EXCELLENT
SLIGHT
SLIGHT
IGI LG795623184

Comments: This Laboratory Grown Diamond was created by Chemical Vapor Deposition (CVD) growth process.
Indications of post-growth treatment.

